

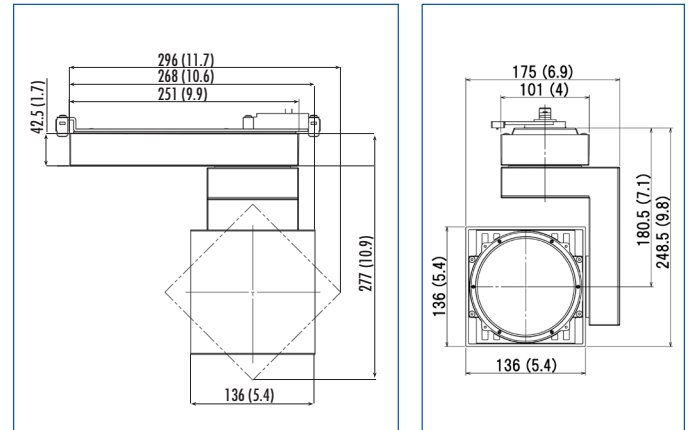


SALIOT

Lighting Innovation MS-V5 smart motorized track mounted LED accent light



SALIOT MS-V5 is a high lumen, high CRI, mesh network enabled motorized LED track luminaire.




Complete dimensions and clearance details provided below

FEATURES

- **SALIOT MS-V5 delivers light output ranging from 3100 lumens to 4310 lumens, in 95 or 83 CRI.**
- **SALIOT is wirelessly controlled from as far as 60 feet by Bluetooth** via a smart device with the SALIOT iOS or android App.
- **SALIOT app controls the luminaire's motors and LED module** to adjust the following features:
 - 9° to 34° beamspread (zoom)
 - 360° horizontal rotation (pan),
 - 90° vertical adjustment (tilt),
 - on/off switching, and
 - dimming from 100% to 1%.
- **As many as 100 SALIOT MS-V5s may be grouped** and settings can be saved as scenes.
- **SALIOT MS-V5 luminaires are manufactured by MinebeaMitsumi and equipped by Edison Price Lighting** with track adapters permitting their use on 120-volt, 20-amp Edison Price Lighting track systems.
- **For more information, [click here](#).**

APPLICATIONS

Luminaire is  certified for use on horizontally-mounted Edison Price Lighting 120-volt, 20 amp track. Not suitable for use on vertically-mounted track. Not suitable for use in a Unicep single-fixture track receptacle. Not suitable for use on electrical circuits including dimming controls of any kind.

Mounting on outlet-box, Eutrac, or Global track system also available. Contact Edison Price Lighting.

PRODUCT CODE

For complete product code, list basic unit and select one item from each following box.

Basic UnitSLT-5

LED Detail (CRI/CCT/luminaire output at 30° beam spread)

95 CRI / 2700 K / 3097 lumens	27KA
95 CRI / 3000 K / 3226 lumens	30KA
95 CRI / 3500 K / 3355 lumens	35KA
95 CRI / 4000 K / 3420 lumens	40KA
95 CRI / 5000 K / 3484 lumens	50KA
83 CRI / 2700 K / 3549 lumens	27KS
83 CRI / 3000 K / 3710 lumens	30KS
83 CRI / 3500 K / 3903 lumens	35KS
83 CRI / 4000 K / 4065 lumens	40KS
83 CRI / 5000 K / 4129 lumens	50KS

Finish

white	- WH
black	- BL

Dimming Notes:

- Luminaire is suitable for use only on an electrical circuit which does not include a dimming device of any kind.
- Luminaire may be dimmed only by Bluetooth via a smart device with the SALIOT iOS or Android App.

Warranty Details:

Fixture covered by MinebeaMitsumi warranty; track adapter covered by Edison Price Lighting warranty.



MinebeaMitsumi
Passion to Create Value through Difference

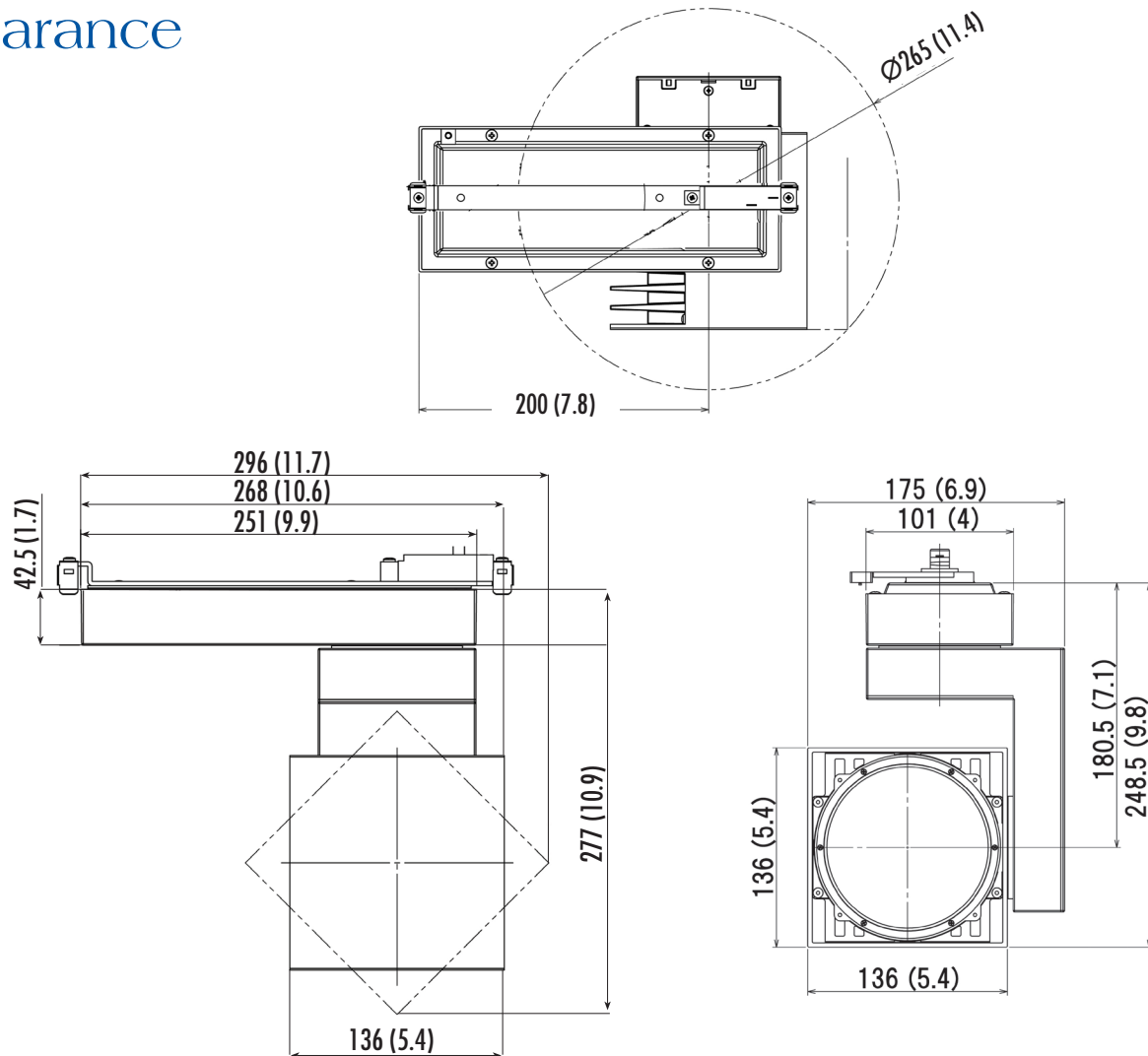


SALIOT

Lighting Innovation MS-V5 smart motorized track mounted LED accent light



Clearance



– see below for photometric reports –





SALIOT

Lighting Innovation MS-V5 smart motorized track mounted LED accent light



PHOTOMETRIC REPORT (9° Beam Angle) (tested per IESNA LM-79-2008)

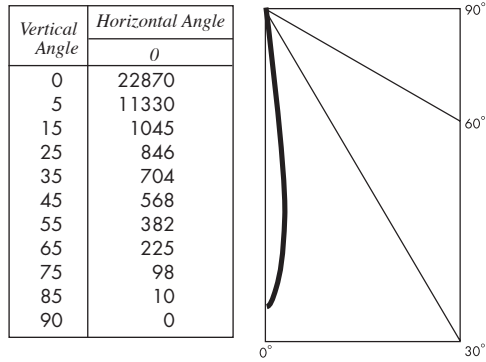
UL Verification Services Report No. 11946825.01

Luminaire mesh network enabled LED track luminaire

LED 95 CRI modules, 3000K

LED Life rated 40,000 hours based on L70/B50 criteria. LM80 report by LED manufacturer furnished upon request

CANDLEPOWER DISTRIBUTION (Candela)



LUMINAIRE LIGHT OUTPUT AND EFFICACY

LED Module Type	Luminaire Light Output	Luminaire CBCP	Luminaire Efficacy (lumens/watt)	System Wattage
95CRI/2700K	2919*	21958*	56*	74
95CRI/3000K	3041	22873	54	74
95CRI/3500K	3163*	23788*	56*	74
95CRI/4000K	3223*	24245*	57*	74
95CRI/5000K	3284*	24703*	57*	74
83CRI/2700K	3345*	25160*	57*	74
83CRI/3000K	3497*	26304*	56*	74
83CRI/3500K	3680*	27676*	57*	74
83CRI/4000K	3832*	28820*	56*	74
83CRI/5000K	3892*	29277*	56*	74

*estimated values

LIGHT OUTPUT MULTIPLIERS (based on 95CRI/3000K LED)

LED Type	95CRI/2700K	95CRI/3000K	95CRI/3500K	95CRI/4000K	95CRI/5000K	83CRI/2700K	83CRI/3000K	83CRI/3500K	83CRI/4000K	83CRI/5000K
Multiplier	0.96	1	1.04	1.06	1.08	1.10	1.15	1.21	1.26	1.28

PHOTOMETRIC REPORT (18° Beam Angle) (tested per IESNA LM-79-2008)

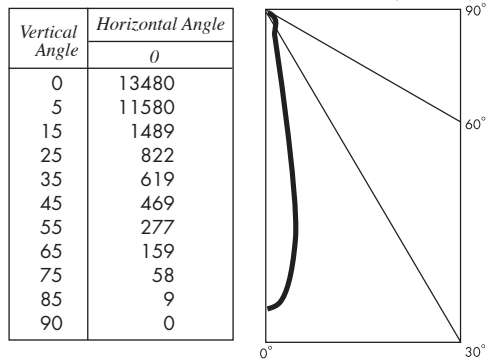
UL Verification Services Report No. 11946825.02

Luminaire mesh network enabled LED track luminaire

LED 95 CRI modules, 3000K

LED Life rated 40,000 hours based on L70/B50 criteria. LM80 report by LED manufacturer furnished upon request

CANDLEPOWER DISTRIBUTION (Candela)



LUMINAIRE LIGHT OUTPUT AND EFFICACY

LED Module Type	Luminaire Light Output	Luminaire CBCP	Luminaire Efficacy (lumens/watt)	System Wattage
95CRI/2700K	2956*	12944*	56*	74
95CRI/3000K	3079	13483	55	74
95CRI/3500K	3202*	14022*	56*	74
95CRI/4000K	3264*	14292*	56*	74
95CRI/5000K	3325*	14562*	56*	74
83CRI/2700K	3387*	14831*	56*	74
83CRI/3000K	3541*	15505*	56*	74
83CRI/3500K	3726*	16314*	56*	74
83CRI/4000K	3880*	16989*	56*	74
83CRI/5000K	3941*	17258*	56*	74

*estimated values

LIGHT OUTPUT MULTIPLIERS (based on 95CRI/3000K LED)

LED Type	95CRI/2700K	95CRI/3000K	95CRI/3500K	95CRI/4000K	95CRI/5000K	83CRI/2700K	83CRI/3000K	83CRI/3500K	83CRI/4000K	83CRI/5000K
Multiplier	0.96	1	1.04	1.06	1.08	1.10	1.15	1.21	1.26	1.28



SALIOT

Lighting Innovation MS-V5 smart motorized track mounted LED accent light



PHOTOMETRIC REPORT (34° Beam Angle) (tested per IESNA LM-79-2008)

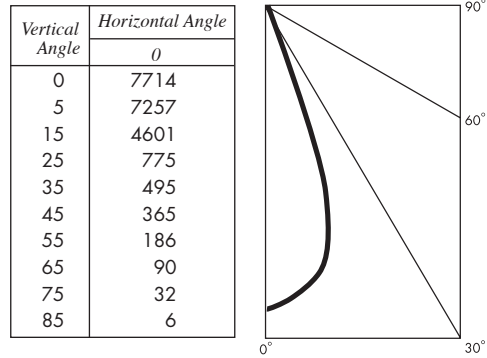
UL Verification Services Report No. 11946825.03

Luminaire mesh network enabled LED track luminaire

LED 95 CRI modules, 3000K

LED Life..... rated 40,000 hours based on L70/B50 criteria. LM80 report by LED manufacturer furnished upon request

CANDLEPOWER DISTRIBUTION (Candela)



LUMINAIRE LIGHT OUTPUT AND EFFICACY

LED Module Type	Luminaire Light Output	Luminaire CBCP	Luminaire Efficacy (lumens/watt)	System Wattage
95CRI/2700K	3097*	7405*	57*	74
95CRI/3000K	3226	7714	57	74
95CRI/3500K	3355*	8023*	58*	74
95CRI/4000K	3420*	8177*	57*	74
95CRI/5000K	3484*	8331*	57*	74
83CRI/2700K	3549*	8485*	57*	74
83CRI/3000K	3710*	8871*	57*	74
83CRI/3500K	3903*	9334*	57*	74
83CRI/4000K	4065*	9720*	57*	74
83CRI/5000K	4129*	9874*	57*	74

*estimated values

LIGHT OUTPUT MULTIPLIERS (based on 95CRI/3000K LED)

LED Type	95CRI/2700K	95CRI/3000K	95CRI/3500K	95CRI/4000K	95CRI/5000K	83CRI/2700K	83CRI/3000K	83CRI/3500K	83CRI/4000K	83CRI/5000K
Multiplier	0.96	1	1.04	1.06	1.08	1.10	1.15	1.21	1.26	1.28