

The background of the entire image is a smooth, horizontal rainbow gradient. It starts with a deep blue on the left, transitions through light blue, green, yellow, orange, and ends with a reddish-orange on the right. The word "refraction" is centered horizontally and vertically over this gradient.

refraction

EDISON PRICE LIGHTING GALLERY



Stairwell installation

Through the re-purposing of "leftover" materials, Francis Milloy's stairwell installation invites you to consider underlying aspects of the creative process at Edison Price Lighting.

Each piece, precisely arranged within the stairwell provides an interrelating "anatomy of process" of a sort, their "incomplete" state allowing for more typically hidden qualities and relationships to be revealed.

Seen in this way, a larger more unconditional experience of form and process can take place, one that perhaps leads us beyond the veils of a purely retinal or analytic experience.

*Francis Milloy
with
Shannon Lai
Jason Lang
Fon Muangkeo*

francis MILLOY

Francis Milloy is a Scottish born, New York City based lighting designer, architect, urban designer and artist who has contributed to many award winning architectural and lighting projects in The United States, Europe, The Middle East and Asia.

He has exhibited as an artist in both the US and UK and currently has his own design/lighting practice in New York City. He is a professional member of The Royal Institute of British Architects, The Royal Incorporation of Architects in Scotland and is a Part-time Faculty member for the MFA Lighting Program at Parson's New School for Design.

www.francismilloy.com

refraction

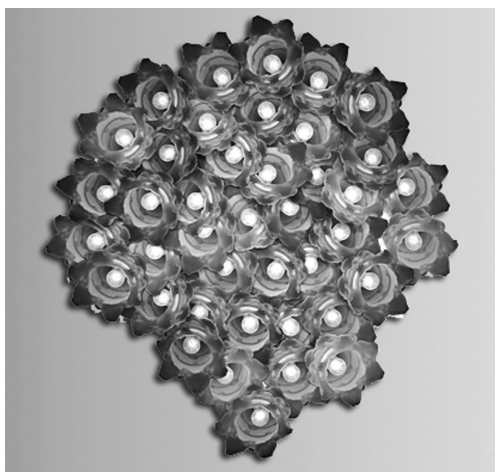
“no single
medium, subject,
or even
exhibition can
capture the
complexities
of light . . .”

No single medium, subject, or even exhibition can capture the complexities of light. In its purest unfiltered form, light's ubiquity makes it a force beyond our scope.

Instead, we understand light through refracted forms—through color, vibrancy, ambiance, and tone. Most often, these qualities are ascribed to that which is illuminated, and not to light itself. Iridescence becomes the quality of snakeskin; saturated color the quality of the rainbow. Light is considered a means to the end, not the end in itself.

Refraction recasts light from the backdrop to the lead actor. Light dances through dichroitic film, tumbles through water, and crashes into leaves at night. In the everyday and the sublime, the natural and the human-made, the literal and the abstract, light is in constant play.

We know well that light informs our external world, making sight possible. But moreover, it informs our internal world, drawing out different emotional responses if in a forest at dusk, or in a neon tube, or a lobby ceiling. Light reveals itself through our emotions, making us, like the artwork exhibited, another refraction of light.



CASCADE

Gelatin Silver Photo Collage
 20½" x 14⅛" x 2" deep

adrienne MOUMIN

Adrienne Moumin is a visual artist based in New York, NY and Silver Spring, Maryland. Moumin works in analog black and white photography, and handmade mixed media and photo collage. During the past 20 years, her work has been presented in many group and solo exhibitions. She was awarded a 2016 Individual Artists and Scholars grant by the Arts & Humanities Council of Montgomery County, MD. Moumin recently had a solo exhibit of her Architectures photo collages at Hill Center Galleries in Washington, DC. She has taught and consulted in a variety of photographic settings. Moumin holds a BA in Documentary Visual Studies and Society from the State University of New York at Empire State College.

www.pictureexhibit.com

refra



1WTC

Digital photograph archival inkjet print, 16" X 24" 2015

alexander ROSSINI

Alexander Rossini has worked as an architect, commercial photographer, and lighting designer, and is interested in using photography to explore how artificial lighting is integral to the urban experience. In Manhattan where architectural lighting has completely saturated the nighttime experience, this series focuses on a single lighting intervention and presents it as an isolated moment with all of its faults or successes brought to the foreground. The photos were shot over the last two years during the artists many unplanned walks around the city, shot freehand without the use of tripods or additional lighting to capture unfolding events as they happened. Using post-processing software, the photos were converted to black and white to find a middle ground between architectural photography, street photography, and abstract representation.

Alexander@fillotsondesign.com

carlos INCLÁN

Carlos Inclán has always been interested in optics and color, and draws inspiration from artists like Alejandro Siña and Peter Sedgley. Carlos' combination of dichroic materials with precise beam control isolates phenomena like reflection, refraction, caustic curves; and the smooth cross fading of light sources relates to sunset or the aurora borealis, which bring stimulation and psychological uplift. The installation can be didactic or also just enjoyed for its color strength. Lacking true pigment, his work behaves like oil slicks or soap bubbles, through interference of wavelengths. Carlos grew up in México City, where he studied architecture at UNAM. He also holds an MS in Lighting from Rensselaer's LRC. Upon migrating to the US, Carlos has worked since 1990 for various renowned lighting design studios.

carlos@focuslighting.com

ction

christine SCIULLI

Christine Sciulli is an immersive installation artist whose primary medium is projected light. Sciulli was selected for the American Academy of Arts and Letters 2014 Invitational Exhibition. Her installations have also been shown at Smack Mellon Gallery, Parrish Art Museum, Edward Hopper House Art Center, and the Islip Art Museum where Janet Goleas described her installation as "a quiet riot of controlled chaos."

Sciulli received an Illuminating Engineering Society Lumen award for her installation ROIL. She was commissioned to create a large-scale projection for the 2013 Global Citizen Festival.

Her theatrical credits include "Hit the Body Alarm" at the Performing Garage, Mabou Mines "Song for New York: What Women Do While Men Sit Knitting" and "Lighthouse 40° N, 73° W" by Christina Campanella and Jim Dawson.

christinesciulli.net and **vimeo.com/xine**



UNTITLED

Dichroic film lamination, pushpins, paper clips, Darklite AR111 recessed adjustable accents, cross fading programmable lighting control. 18' w x 10' H 2015

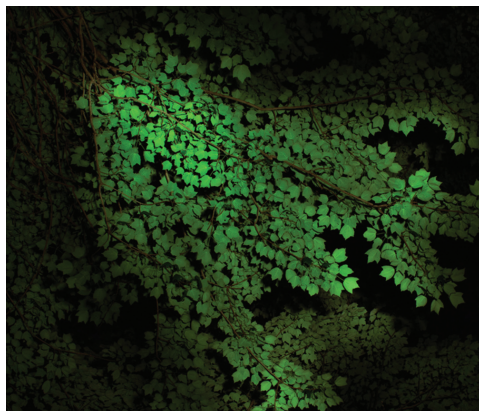


INSTALLING ROIL *Photograph, 30"x30"*



SOMEWHERE ELSE

*archival inkjet print, prism, DVD
Dimensions vary.*



TREE 6

C-Print Photo, Plywood. 36" x 50"

david CHAN

David Chan is a visual artist based in Brooklyn, New York. He holds a BFA in Photography from Parsons School of Design. An escapist rebelling against a pragmatic upbringing, his work investigates his experience of the physical world, in which the romantic and scientific are at a constant friction with each other. He is interested in the moment when one breaks routine and loses a sense of familiarity with the world, being reminded of the nature of being and self as a result. Using a combination of photography, machine-made materials, and everyday objects, his work at once provokes wonder and disappointment, as visual phenomena are created using readily-available objects in unsophisticated ways. Through his work, he seeks to understand the distance between the picturesque landscapes of the world and the abrasive realities of day-to-day existence.

www.whatevenis.life

refra

garrett CARROLL

Garrett Carroll is best known for photographing with his medium format camera in the mid south of Georgia and Tennessee capturing black and white landscapes of interstate medians, a series "Between The Interstates," and the life of small towns. Raised in North Georgia, his focus was in the arts and design where he received his associates degree in graphic design from Chattanooga State Community College. During school, he became captivated with the camera, printing processes, and final outcome of a photograph. Since graduating, Garrett currently specializes in fine art printing as well assists a photographer. His most current work "Canopy Nights," are mesmerizing structures of trees being lit by spotlight.

www.garrettvcarroll.com

gene LAMBERT

Deeply involved in the world of architecture, design and lighting for the last 15 years, Gene Lambert draws the inspiration for his art explorations from his experience in dealing with various materials and their interaction with light. He believes that artwork does not have to always carry a powerful message or an emotionally charged, provocative statement; it can be a mere reflection of how different materials come together to create an appealing object, an interesting focal point, something that could grab one's attention and make them go "Hmmm..."

This glowing sculpture comes to life through a series of suspended acrylic fins, which create a fluid inverted landscape, sidelit by Edison Price Lighting track luminaires with PAR30 LED color-changing lamps by Ketra. The dynamic light show is dialed into the "cool" range of 4,000K through 8,000K CCT with a further shift into the blue area of the spectrum.

GLambert@oneluxstudio.com

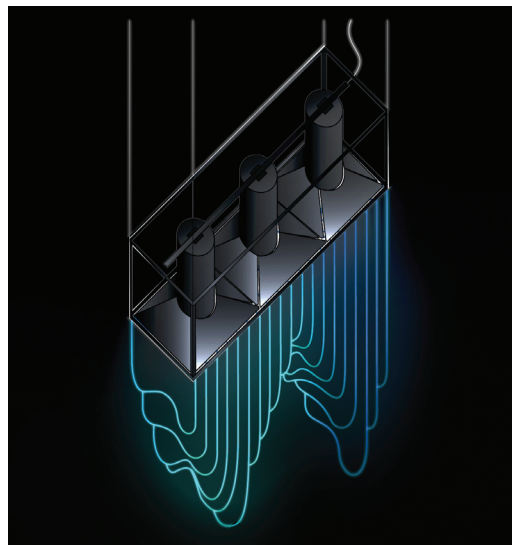
ction

greg DAY

Greg Day is a Painter and an Architectural Lighting Designer. He began his lighting career as an intern with Gary Gordon Architectural Lighting in 1986; he currently has his own practice, Greg Day Lighting.

When painting Greg first thinks about shadow and light; line, space, hue, pigment, texture, layers...and emotion, quickly follow.

www.gregdaylighting.com



UNTITLED

Acrylic/aluminum/track fixtures/LED PAR lamps
12" x 36" x height varies 2016



"E41234"

Acrylic and Resin on Panel 16" X 12" 2015



SLAB 8 OF 10

Spray paint, latex paint, plaster and found plywood, 43.5" X 56" x 2"

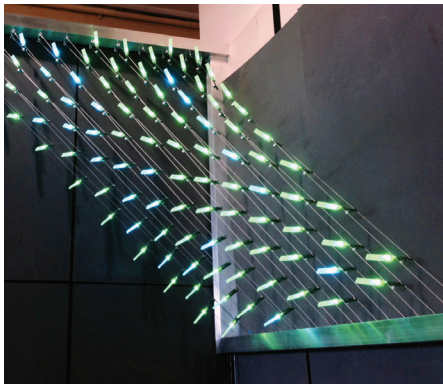
jason a. CINA

I grew up in NYC on Roosevelt Island and currently live in Queens. My field of study was in stage design but I quickly transformed my career to be that of a fine artist. After lighting and painting scores of plays in the trenches of Off Broadway, I spent the subsequent decade developing a cohesive body of work in photography which took me on several adventures across America with actors and jazz musicians. Exhausted, I decided to stop photographing altogether and moved up to the front burner painting and drawing concepts developed while idle in hotels and airports.

Back home, I developed an art program in an adult day care facility where I covertly procured a space to develop the series now entitled SLABS which consists of ten freely carved and thickly painted wood panels derived solely from found materials. The pieces have been showing regularly since completion and as of late I have made three new smaller pieces during my residencies at Topaz Arts in Woodside, Queens.

www.jasonacina.com

refra



(LEFT) DIGITAL GARDEN (PROTOTYPE)

Prototype - 4' X 4' X 4', Full Installation, 12' X 26' X 120' X 12'
Custom interactive LED cable system 2011

jason KRUGMAN

Jason Krugman works at the intersection of physical computing, fine art and lighting. He runs a studio specializing in interactive architectural LED systems and public artworks. As an artist and a designer, Krugman specializes in arranging electricity and light within 3-dimensional spaces, taking advantage of many different materials and manufacturing processes to do so. He currently teaches at Sarah Lawrence College and has also taught at Rhode Island School of Design and Eugene Lang. Krugman holds degrees in Economics and Interactive Media from Tufts University and NYU's Interactive Telecommunications Program.

www.jasonkrugman.com

john FOLCHI

John Folchi is a Bronx native and White Plains based visual artist, who paints landscapes, cityscapes, and still lifes in oil. John received a Bachelors and Masters of Art at Herbert Lehman College, and studied at the Art Student's League. John's Paper Series explores light on white paper. Here light carves out space and creates drama from paper, a fragile and ephemeral material John has exhibited solo shows at the Sears-Peyton Gallery, Images Briarcliff, Geary Gallery, Greenpoint Gallery, and others. His work is also a part of many prominent collections such as The Department of the State, Washington D.C., and Pfizer, Inc., New York, NY.

www.johnfolchi.com

ction

john PROCARIO

While growing up in the suburbs of New York, John enjoyed spending time in the woods and making objects from what he found there. Because of his surroundings, wood naturally became his medium of choice. After earning a Bachelor of Fine Arts from Purchase College, SUNY, John took his love for sculpture and brought it into the world of design. John's current work is based on the idea that wood is a metaphor for the body. Like bone or muscle, wood will flex comfortably up to a point, but under too much stress, it will break.

www.johnprocario.com



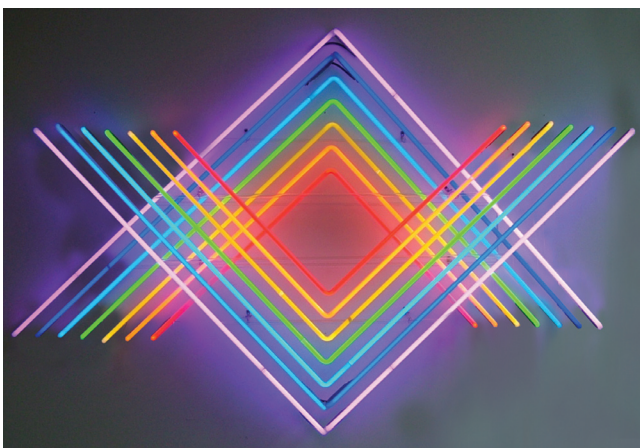
PAPER ON OIL 1

Canvas, oil. 18"x 24"



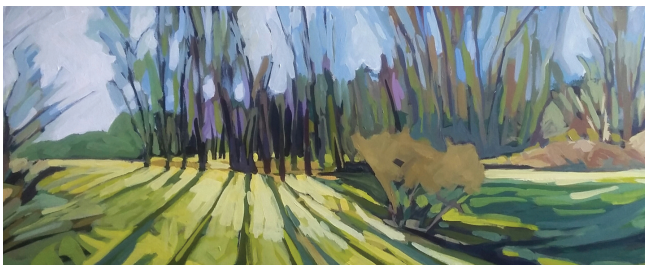
FREEFORM

White oak, LED, plexiglass. 5'L X 2'9"W X 18"H



PRISMATIC

Neon tubes, 80" X 54" X 10"



SHIPETAUK IN WOODS: EVENING LIGHT

Acrylic on canvas. 12 x 36"

kenny GREENBERG

Kenny Greenberg has been creating neon and electronic art since the 1980s. He has exhibited at Socrates Sculpture Park among other public venues. He has collaborated with numerous world class artists and creative teams. His work is eclectic and often layered in ways that are accessible to all walks of life.

www.neonshop.com

refra

leni PAQUET-MORANTE

Leni has explored landscape themes through sculpture and painting since 1981. She attended the Johnson Atelier Technical Institute of Sculpture from 1984-1985 where she created a series of bronze works. In 1986 she received an Artist-In-Residence Grant from the Maryland State Council on the Arts, and was commissioned to create a bronze sculpture for Walt Whitman High School, Bethesda, MD. Leni received a BFA from the Mason Gross School of the Arts in 1991. Solo exhibitions of paintings include the Program In Women's Studies, Princeton University in 1997; Passaic County Community College, 1997; Johnson & Johnson Corporate Art Program, 1998. She received a Juror's Merit Award in 1996; and a Purchase Award in 2016. Leni's sculpture and paintings can be found in private and public collections throughout NJ. A solo exhibition is scheduled for 2019 at the Johnson & Johnson Corporate Art Program, NJ.

www.saatchiart.com/lenipaquetmorante

nargiza USMANOVA

Nargiza Usmanova is a designer & visual artist based in Oakville (Ontario, Canada). Nargiza's career has spanned different fields of visual art, including light installations, performances, interior and wall arts, exhibit design, graphic design, illustration, and painting. This broad experience provides her a base for her passion of art lighting. Nargiza works with light in art and architecture, including designing light in public areas, interior spaces, performances, and installations. Nargiza's art is in private collections in Belarus, Russia, Kazakhstan, Finland, Turkey, and Canada.

www.nargiza.net

ction

peter BYNUM

Peter Bynum is a New York-based painter known for his light-infused sculptural paintings and large-scale installations. Bynum's work has been exhibited in Rome, Shanghai, Basel, Paris, Cologne and throughout the U.S. In 2011, the Rome Museum of Contemporary Art included his paintings in its exhibition "The Future of Contemporary Art." In 2013, New York's Museum of Art & Design named him one of the most influential artists of the last half-century who works with glass. In 2014 he was commissioned by the NY Public Library to fill its 5th Avenue windows with 17 large-scale illuminated paintings. His most recent installation, commissioned by the Hudson Valley Center for Contemporary Art, reinterprets his work into 10 giant canvases, each 23 ft. high x 16 ft. wide, for the Hudson Riverfront

www.peterbynum.com



SERPENT (LEFT) Canvas, scrim cloth, acrylic, 30"x48"
LAGUNA (RIGHT) Canvas, scrim cloth, acrylic, 30"x48"



PATHS AND COLORS Acrylic paint on tempered glass
32" X 72" X 3"



DON'T LOOK BACK

*Paper, acetate film, foam core,
and LED ribbon, 20" X 30" X 5"*

stephen BICKFORD

Art and design frame the context for Stephen Bickford's life. For the last 16 years, those disciplines have taken the form of architectural lighting design, where Bickford guides and designs lighting for public spaces, residences, commercial and retail projects, places of worship and hospitality — especially restaurants. He previously worked at prominent New York City lighting design firms and currently has his own lighting consulting and design company.

From 1974-2000 Bickford was a lighting designer and production designer for international rock tours, feature films, commercials, network/cable TV, live satellite broadcasts, theme parks and business theater. Always, in the background of these professional pursuits, he created art.

Bickford has evolved his expression and explored presentational styles since early childhood. His past experience in production design, with its combination of scenery and lighting, informs his most current work.

www.stephenbickfordart.com

refraction



ST. PETER'S CHURCH in NEW YORK

rick SHAVER

The lighting designer of Refraction is Rick Shaver, a lover of art with over forty years of experience illuminating art exhibitions and installations. Since his early memorable experience lighting the Louise Nevelson sculpture at St. Peter's Church in New York City (pictured left), Rick has illuminated numerous private art collections, galleries and museums throughout the US, Europe and the Middle East. Rick's lighting design has been honored with three Lumen Awards, and published in trade and retail media. In his "day job," he leads the Research and Development Department at Edison Price Lighting. More than a few ideas for product design and improvements occurred during Rick's frequent trips up and down a ladder while lighting art.

rshaver@epl.com

“functional, efficient,
original, no-nonsense design” – **Edison Price**



epl

Edison Price began as a lighting designer; he became a manufacturer only to provide the tools needed to affect his architectural vision. His fixtures and track systems – optically precise yet elegantly unobtrusive – helped define the modern architectural lighting industry.

Price was awarded the Illuminating Engineering Society's Richard Kelly Lifetime Achievement Award, and the rare AIA Medal, recognizing him as “one who has brightened more excellent architecture than anyone else in history.”

Edison Price Lighting's Gallery is dedicated to its founder, Edison Price (1918 - 1997), whose innovations – including recessed fixtures with spun aluminum reflectors, continuous lighting track, and wall grazing systems – illuminated many of the most beautiful spaces built in his time.

Edison Price Lighting upholds Price's legacy by continuing to design and manufacture products that optimize his goals of optical precision, glare control, efficiency and durability. This gallery is an homage to a man who showed that product design and manufacture can, and should, be pursued as an art.



Edison Price Lighting... designing and manufacturing superb lighting fixtures for over 60 years

Edison Price Lighting has designed and manufactured the highest-quality lighting solutions since 1952. Our comprehensive offering includes recessed downlights, accent lights, and wallwashers; track lighting systems; wall grazing systems; and optical accessories.

Our luminaires set the standard for optical performance. We combine meticulously shaped reflectors, durable materials, and advanced technologies to deliver precise illumination. Our downlighting is comfortable; our accent lighting, flexible; our narrow spotlighting, focused; and our wallwashing, consistent from ceiling to floor.

Our luminaires set the standard for unobtrusive elegance. The apertures of our recessed fixtures are quiet and comfortable, and the form and lines of our track fixtures are streamlined. As a result, our luminaires blend into the architecture.

As a testament to our craft, Edison Price Lighting has illuminated over 450 museums, galleries, and other art institutions.



recessed fixtures

THREE, FOUR, FIVE

A suite of **3"**, **4"** and **5"** aperture luminaires include downlights, accent lights, narrow spotlights, and wallwashers. The luminaires control aperture brightness, eliminating glare from normal viewing angles. Swap the reflectors to change functions or beamspreads after installation.

PRIM

The trimless square **PRIM** is available as a downlight, accent light, narrow spotlight, and wallwasher. The Prim is the only specification-grade trimless square fixture made with an anodized aluminum reflector, maintaining long-lasting consistent reflectivity, color, and performance.

ATZ

The Armstrong TechZone™-compatible **ATZ** features a square aperture and low-brightness anodized reflector to help create a clean, quiet ceiling. The **ATZ** family of lensed wallwashers and downlights includes the only specification-grade downlight for the TechZone 4" technical zone.

APlus

The **APlus** is the industry's first LED combination downlight/wallwasher, featuring interchangeable reflectors for downlighting or standard wallwashing, corner wallwashing, or double wallwashing for corridors. The APlus Sunset model also offers dim-to-warm dimming.



track fixtures

Surface-mounted versions are also available

MiniMax LED

The **MiniMax LED** accent lights, narrow spotlights, and wallwashers are small in size, yet big in performance. From their minimalist cylinders, MiniMax LEDs deliver top-of-the-line color rendering and color consistency. MiniMax LEDs can be easily focused, thanks to 385° horizontal rotation, down to 90° vertical adjustment, and locking functions.

MidiMax LED

The **MidiMax LED** accent lights, narrow spotlights, and wallwashers are compact and robust. IDM MidiMax LEDs include integral dimmers for individual fixture control and dimming on 277-volt track. MidiMax LMTs offer wireless control, including tuning correlated color temperature.

Artima LED

The high-output **Artima LED** fixture family includes the **Artima LED/3** and the **Artima LED/5**. The Artima LED/3 ring baffle spotlight offers up to 10,000 Center Beam Candlepower (CBCP), and the Artima LED/5 9° spotlight up to 60,000 CBCP. The Artima LED/5 wallwasher provides up to 5600 lumens to evenly illuminate multistory walls.

Stacklite

Powered by a Citizen® chip-on-board linear LED module, the **Stacklite** uniformly delivers floor-to-ceiling wallwashing. The **Stacklite** is focused by adjusting the internal optical assembly, not the housing. Because their housings remain stationary, multiple **Stacklites** appear identical regardless of focus.



track systems

track systems

SightLine

Our most popular track system, **SightLine** can be mounted on the ceiling, in the ceiling (including sheetrock ceilings), or by aircraft cable or pendants. Its long spans, single aluminum extrusion, and minimal joints make the **SightLine** both durable and attractive.

Unicep

The **Unicep** is the mounting solution for occasional track lighting needs. Available as either surface-mounted or recessed (including sheetrock ceilings), the unobtrusive **Unicep** services a single 120-volt track fixture.

Upline

The **Upline** is a dual function track system with integral LED uplights that deliver 644 lumens per linear foot. This clean, understated track can be suspended by pendants or aircraft cables, and painted any color to coordinate with the interior décor.



wallgrazing systems

Spredlite LED

The **Spredlite** wallgrazing system uses integral LED arrays and spread lenses to uniformly cast light down the entire length of a wall. The Spredlite accentuates textured walls, such as wood or fabric, and minimizes bright spots on reflective walls, such as polished marble and glass.

epl factory



Edison Price Lighting has proudly operated a full-scale factory in New York City since 1952. Far more than an assembly operation, it is a complete metal-working shop. We fabricate nearly all our parts -- down to the nuts and bolts -- in-house, guaranteeing quality control, fast turnaround times, and the detailed-oriented skills needed for modifications. We are a proud 'Made in USA' company, employing locally and sourcing materials regionally.

epl gallery



Located in the Long Island City arts and manufacturing community, the Gallery is surrounded by urban artists who craft from raw materials. It is sited above Edison Price Lighting's metal-working factory, where sixty people too craft raw materials with their hands and machines. The two final works -- art and luminaires -- intersect in the Gallery. The Gallery joins over 400 art institutions illuminated by Edison Price Lighting. The only difference is here, we encourage you to look up, and reconsider lighting as art itself.

The Edison Price Lighting Gallery is available for tours, mock ups, meetings and events.

edison price lighting gallery

www.epl.com

gallery@epl.com



41-50 22nd Street, Long Island City, New York 11101 718 685 0700 www.epl.com