









We are the trusted lighting brand for internationally renowned museums and culturally significant architecture. Our lighting can be admired in Seagram Building designed by Ludwig Mies van der Rohe, Kimbell Art Museum by Louis Kahn, MoMA, The Getty Center, World Trade Center Transportation Hub by Santiago Calatrava, and U.S. Embassy in London by Kieran Timberlake.

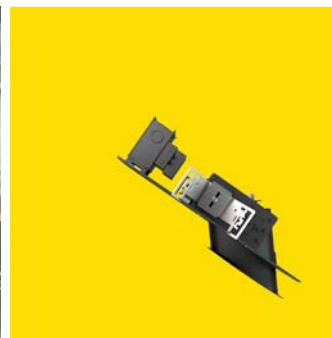
Our founder, Edison Price, helped shape the modern lighting industry. Emerging on the scene as an inventor, designer, and lighting consultant, Price obsessed over his projects, refining every detail of the application, engineering, and science of lighting, and the role that design plays in the convergence of these elements—founding Edison Price Lighting to address the needs of his growing clientele—which included Marcel Breuer, I.M. Pei, Philip Johnson, Buckminster Fuller, Edward Larrabee Barnes, and Skidmore, Owings & Merrill—high-profile architects who sought out Mr. Price for his modernist aesthetic, deep understanding of the application of light, strict commitment to quality, and ingenious ability to realize visions.

Frequent collaborations with lighting consultants Claude Engle and Richard Kelly and engineer/mathematician Isaac Goodbar led to innovating never-before-made, efficient, low-aperture brightness lighting. Always Mr. Price strived for optical precision, glare control and efficiency—and to design clean, unobtrusive fixtures that honored the beauty of iconic architecture—which remains our design ethos to this day.

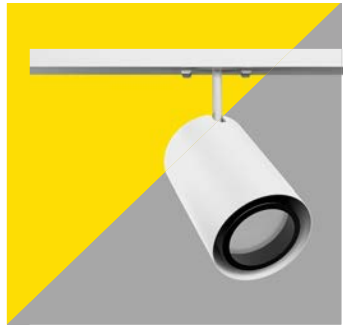




Since 1952 to the present, Edison Price Lighting has been designing and crafting architectural lighting in New York City. Our award-winning lighting solutions – illuminating over 450 museums and galleries worldwide – set the bar for museum-quality lighting.







We are the last living American lighting factory, designing, crafting, and testing out of our factory, headquarters, and testing & performance laboratories. Our operation allows us to make use of our close relationships with designers from top agencies; to listen to their needs and to translate them into unparalleled lighting solutions.



Speed Art Museum • Louisville, KY

Facing forward, we strive to uphold the unique philosophy upon which our company was founded while adapting to designers and architects' ever-changing needs. We believe that quality stands the test of time. Thank you for helping to sustain the craftsmanship of American-made, locally sourced, long-lasting lighting.







Our track lighting can emphasize the grandeur of high-ceiling spaces, make a spacious room feel inviting, and expertly bounce electric light around daylight. Our expert control of light lies in our roots of realizing the visions of architectural greats including Louis Kahn, Philip Johnson, Skidmore, Owings & Merrill, and I.M. Pei. Our timeless, inimitable collection of track lighting is venerated by museums including The Getty, The Metropolitan Museum of Art, Kimbell Art Museum, and Crystal Bridges. Our track exalts significant architecture and the prominent designers and architects with whom we collaborate to orchestrate stunning spaces that continue to inspire art lovers worldwide.







### **Museum Quality**

- Signature low-aperture brightness
- Optical purity; expert control of light
- Minimalistic design; durable, lasting form
- Unparalleled wallwashers designed to deliver an even, ceiling-to-floor wash of light
- Elegant, seamless, narrow track systems

### **Paint with Plain Vanilla**

- Unobtrusive design honors architecture & lets art shine
- Timeless, modern design
- Fixtures are engineered to solidly lock into our specially designed track systems, maintaining a clean-lined silhouette
- Aesthetics synced with function: material is precisely cut for optimal efficiency while reinforcing a minimalistic design

### **Modularity**

- On-site interchangeable, upgradeable optics
- A plethora of beam options & optical accessories
- Snap-in installation & one-handed modifications
- Combine optical accessories addressing either beam, color, diffusion, or intensity to effortlessly alter visual effects

### **Combine Families for Ideal Design**

- Continuity in ceiling architecture
- Our track families have been designed to work together on projects requiring a wide variety of beam spreads & specialty applications
- Combine fixtures from different series to design the most effective, precisely balanced, visually enhancing illumination

### **Play with Light**

- Remote-controlled motorized track fixture w/controllable aiming
- Dramatized spotlighting with framing projector
- RGBW capability

### **Bluetooth**

- Control light output via a smart device or desktop app
- Individual or group addressability
- On/off control
- Dimming down to 0.1%
- Bluetooth + integral dimmer capable in one fixture





Minimal, contemporary design created for the Getty & desired by world-renowned museums, which require durable & elegant lighting

## Artima Series

Artima2 Artima3 Artima5

### CONTEMPORARY

Aperture	2.875" • 3.625" • 5.625"
Functionality	Very Narrow Spot, Narrow Spot, Flood, Wallwash
CRI	Up to 98+
Max Lumens	Up to 7200
Optical Range	5°- 60°
Capabilities	Bluetooth, Integral Dimming Module (IDM)
Optical Accessories	Cross Baffle, Ring Baffle
Mounting Height	10'- 25'
Finish	White, Black, Industrial Silver, Custom Color

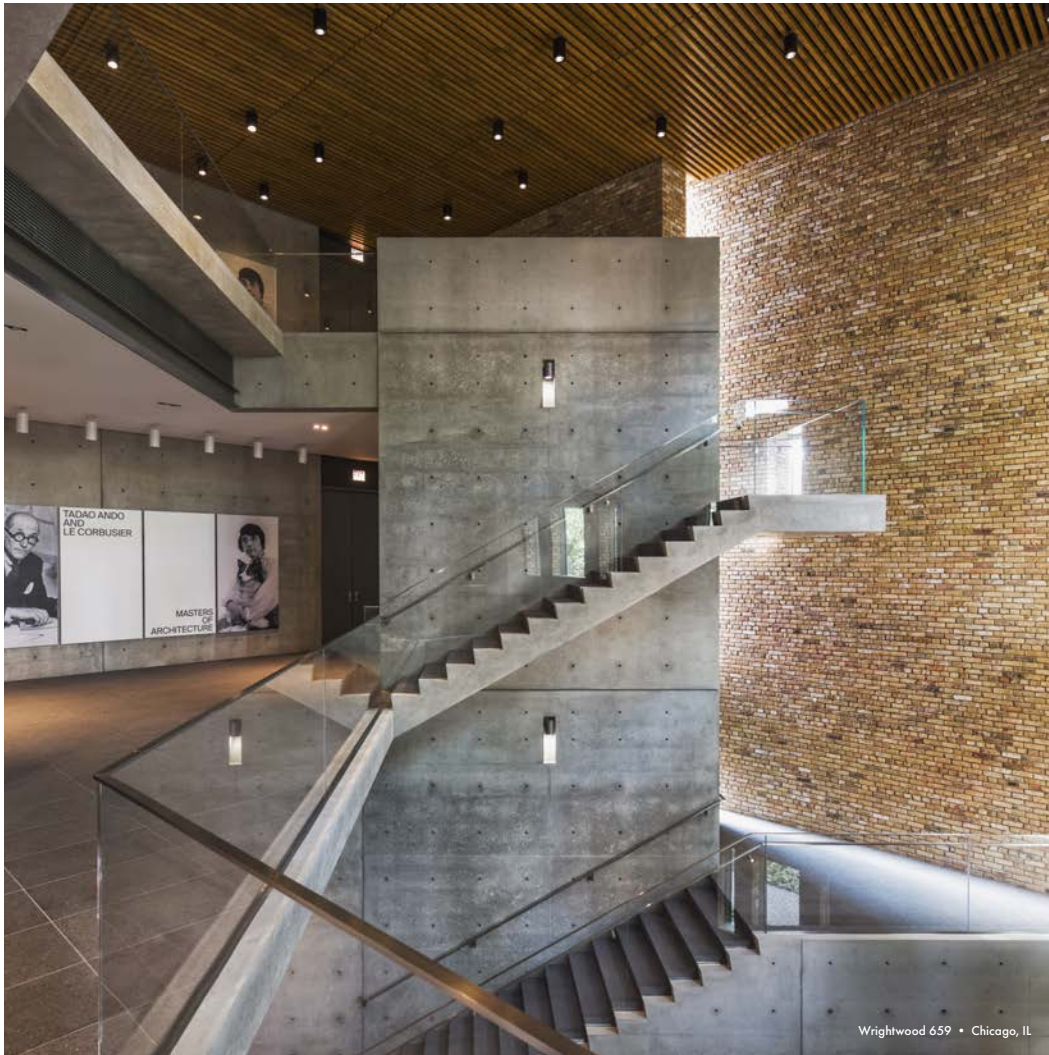




# MAXseries

Maxima MidiMax MiniMax

## CLASSIC CYLINDERS



Aperture	3.375" • 5" • 5.75"
Functionality	Very Narrow Spot, Narrow Spot, Flood, Wallwash
CRI	Up to 98+
Max Lumens	Up to 5200
Optical Range	5°- 60°
Capabilities	Bluetooth, Integral Dimming Module (IDM)
Technologies	RGBW, Tunable White
Optical Accessories	Cross Baffle, Ring Baffle
Mounting Height	9' - 25'
Finish	White, Black, Industrial Silver, Custom Color



Clean & classic cylinder series designed to accentuate an unobtrusive form, lightweight durability, and glare-less illumination, with a wide range of outputs for low to very high ceilings

Petite and discreet with impressive  
efficacies, beams, and controls  
ideal for more intimate spaces



Acquavella Galleries • New York, NY

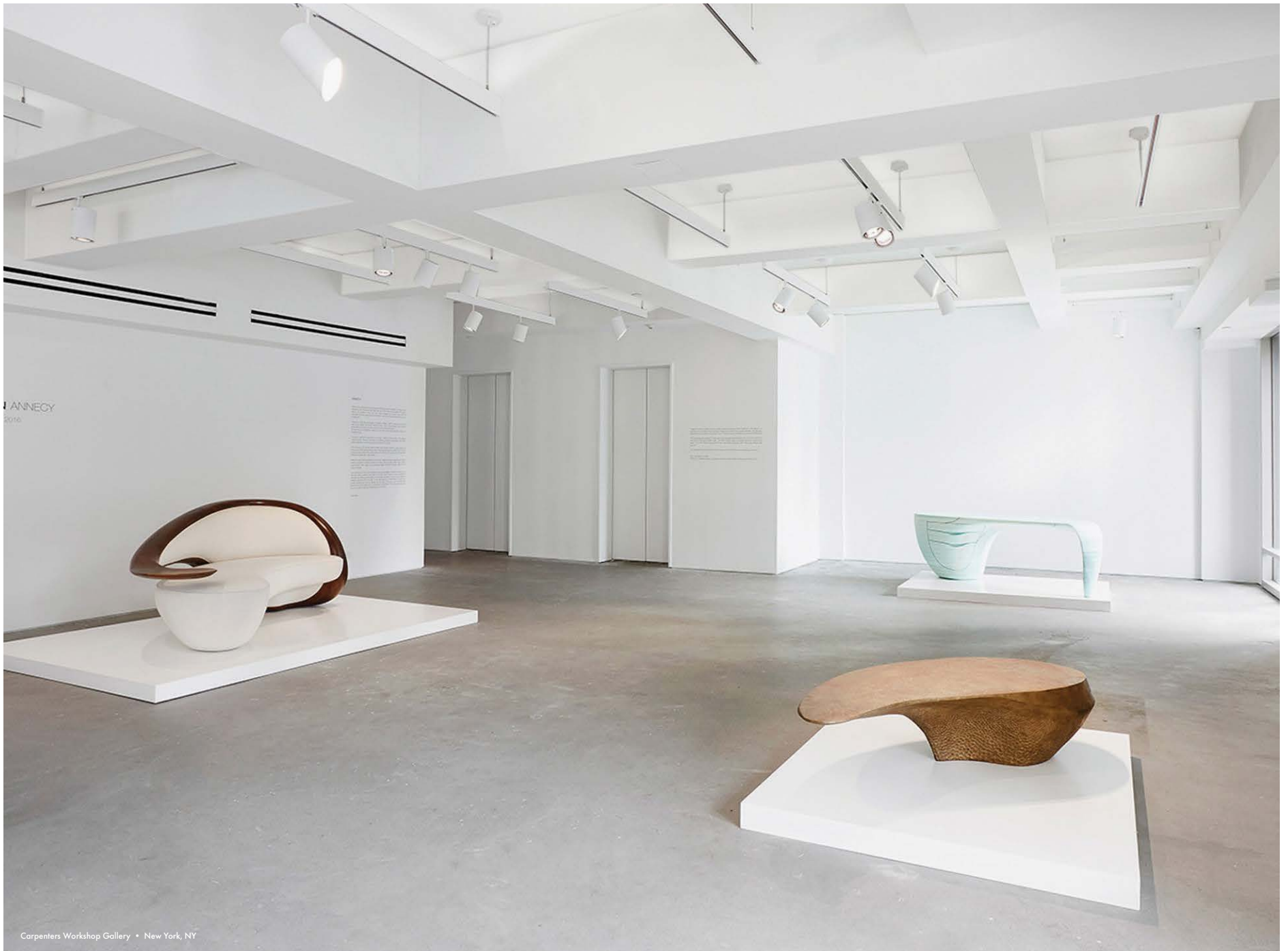
# MagicWandSeries

PETITE AND DISCREET



Aperture	2.50" • 2.75"
Functionality	Spot, Flood, Wallwash
CRI	Up to 98+
Max Lumens	Up to 1500
Optical Range	10°- 36°
Capabilities	Bluetooth
Optical Accessories	Ring Baffle
Mounting Height	10' - 12'
Finish	White, Black, Industrial Silver, Custom Color







Matthew Marks Gallery • West Hollywood, CA

Functionality	Wallwash
CRI	Up to 97
Max Lumens	Up to 4100
Capabilities	Integral Dimming Module (IDM)
Mounting Height	10'- 12'
Finish	White, Black, Industrial Silver, Custom Color

Powerful, uniform wallwashing powered by a sophisticated optical system, in a modern, compact design that harmoniously integrates into significant architecture

# StackliteSeries

GRAND WASH OF LIGHT



# ETC Series

DRAMATIC



New-York Historical Society • New York, NY

Functionality	<b>Framing Projector</b>
CRI	<b>Up to 90+</b>
Max Wattage	<b>14W</b>
Optical Range	<b>19°- 50°</b>
Mounting Height	<b>10' - 15'</b>
Finish	<b>White, Black</b>



Framing projector providing theatrical, precisely shaped light to dramatically highlight figurines, statues, and interactive displays



Glenbarra Art Museum • Himeji, Japan



Robust motorized track fixture providing hands-free control of full pan, tilt, beam focus and dimming via Bluetooth



Functionality	Motorized Track Fixture
CRI	Up to 95
Max Lumens	Up to 4310
Capabilities	Adjust Aiming, Beam Spread & Dimming Remotely
Mounting	Surface & Track Mounting
Mounting Height	15' and higher
Finish	White, Black

# SaliotSeries

MOTORIZED TRACK FIXTURE

Edison Price Lighting is a legacy brand whose lighting products contribute to the grand mystique of venerable architectural structures and renowned museums—sites that stand the test of time, continuing to captivate people for decades and beyond. Informed by tradition, we move into the future retaining the design ethos upon which our brand was founded: optical purity, fixture integrity, and design sensibility—while infusing the latest technologies and innovations. We are humbled to present our portfolio of lighting solutions that are an ode to architecture, art, and ‘functional, efficient, no-nonsense design.’





Private Residence



Engineered for sleekness in depth and width  
to fit into the most constricting plenum spaces

# Wafer Series

SHALLOW

Aperture/Depth	2", 3", 4" • 2.5" Depth
Functionality	Downlight, Adjustable, Wallwash
CRI	Up to 90+
Max Lumens	Up to 1800
Optical Range	12° - 60°
Specialty Applications	Marine Grade, High Humidity
External Reflector Options	Round • Square   Trim • Trimless   Millwork
Reflector Finish	Clear, Diffused Clear, Gold, Black, White, Custom
Listing	IC Rated



Most extensive family with multiple functions,  
beam spreads, apertures, and specialty  
modifications, all in identical form  
factors to complete any project



# ThreeFourFiveSeries



Gartner Auditorium, Cleveland Museum of Art • Cleveland, OH

## COMPLETE FAMILY

Aperture	3" • 4" • 5"
Functionality	Downlight, Adjustable, Wallwash
CRI	Up to 98+
Max Lumens	Up to 5100
Optical Range	15°- 56°
Technologies	RGBW, Tunable White, Dim to Warm
Specialty Applications	Wet Location, Steamroom, Marine Grade, High Humidity
External Reflector Options	Round • Square   Trim • Trimless   Millwork
Reflector Finish	Clear, Diffused Clear, Gold, Black, White, Custom
Listing	IC Rated



# SquareSeries

## FORMAL ARCHITECTURE



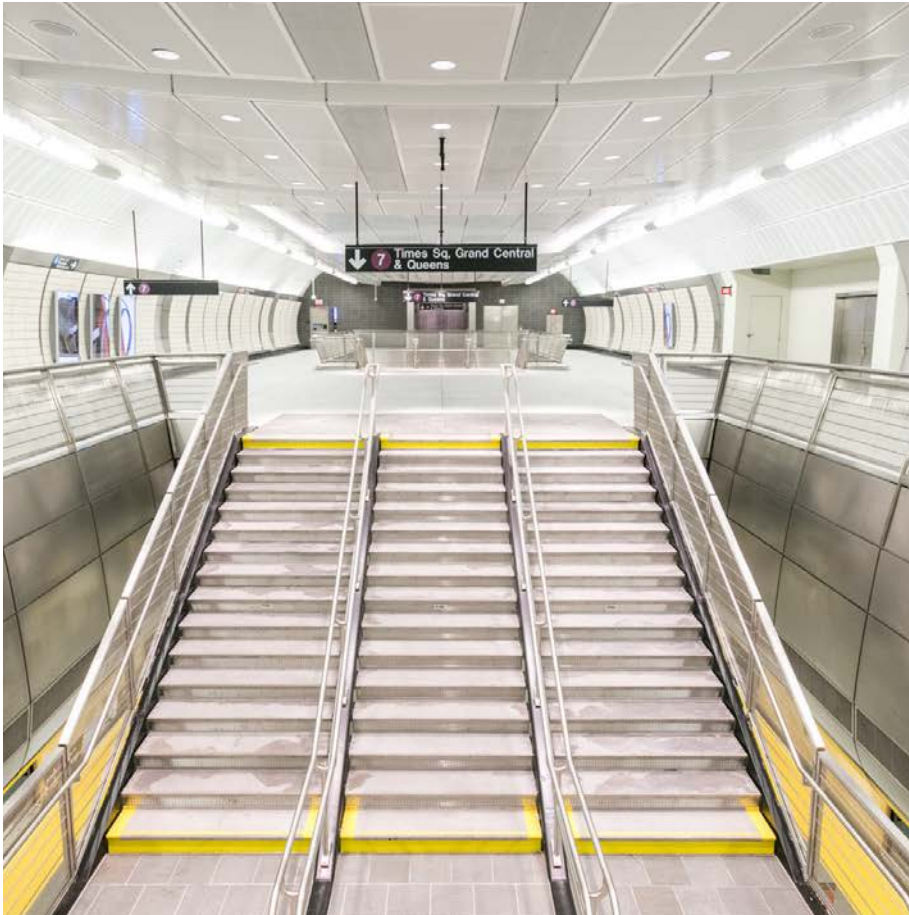
Squire Sanders & Dempsey • Cleveland, OH

Aperture	3" • 4" • 5"
Functionality	Downlight, Adjustable, Wallwash
CRI	Up to 98+
Max Lumens	Up to 4000
Optical Range	14°- 60°
Specialty Applications	Marine Grade, High Humidity
External Reflector Options	Round • Square   Trim • Trimless   Millwork
Reflector Finish	Diffused Clear, Black, White
Listing	IC Rated



Precisely cut corners and a minimal trim form a sharp, seamless design that conforms to formal architecture when seeking a more elevated, contemporary ceiling





Metropolitan Transportation Authority • New York, NY

Dependable widespread, uniform illumination with high output ideal for general lighting in open spaces

Aperture	4" • 5" • 6"
Functionality	Downlight, Adjustable, Wallwash
CRI	Up to 90+
Max Lumens	Up to 8000
Optical Range	12°, 60°
Specialty Applications	Wet Location, Steamroom, Marine Grade, High Humidity
External Reflector Options	Round   Trim • Trimless
Reflector Finish	Clear, Diffused Clear, Gold, Black, White, Custom
Listing	IC Rated



# FTF series

OPEN SPACES



The Lexington Hotel • New York, NY



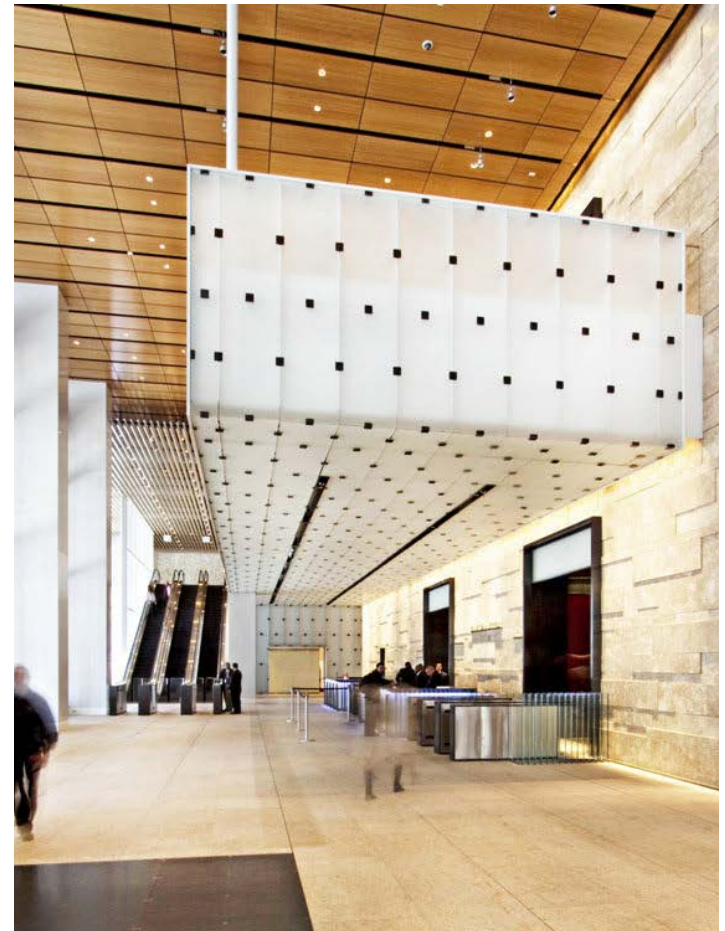
Expansive illumination sympathetic  
to the architecture of monumental spaces with  
high ceilings, cementing lasting first impressions



# AtriumSeries

## HIGH CEILINGS

Aperture	7"
Functionality	Downlight, Adjustable, Wallwash
CRI	Up to 98+
Max Lumens	Up to 8000
Optical Range	9° - 38°
Specialty Applications	Marine Grade, High Humidity
External Reflector Options	Round   Trim
Reflector Finish	Clear, Diffused Clear, Gold, Black, White, Custom





# Presto & Prestina Series

## REMODEL



Birch Bayh Federal Building and U.S. Courthouse • Indianapolis, IN

Identical optical performance, appearance,  
and apertures to standard series for versatility  
in design and planning of remodel applications



Aperture	3" • 4" • 5"
Functionality	Downlight, Adjustable, Wallwash
CRI	Up to 98+
Max Lumens	Up to 2700
Optical Range	14°- 60°
Specialty Applications	Marine Grade, High Humidity
External Reflector Options	Round   Trim • Trimless
Reflector Finish	Clear, Diffused Clear, Champagne, Gold, Black, Custom



Refine spaces by gaining  
complete control over hue,  
color temperature, saturation,  
and dimming using the latest  
RGBW protocols

Aperture	4"
Functionality	Downlight, Adjustable, Wallwash
Tunability	RGBW, Tunable White
Max Lumens	Up to 2000
Optical Range	20°- 60°
Specialty Applications	Marine Grade, High Humidity
External Reflector Options	Round   Trim
Reflector Finish	Clear, Diffused Clear, Black, White, Custom

# MoodMasterSeries



FINE TUNE



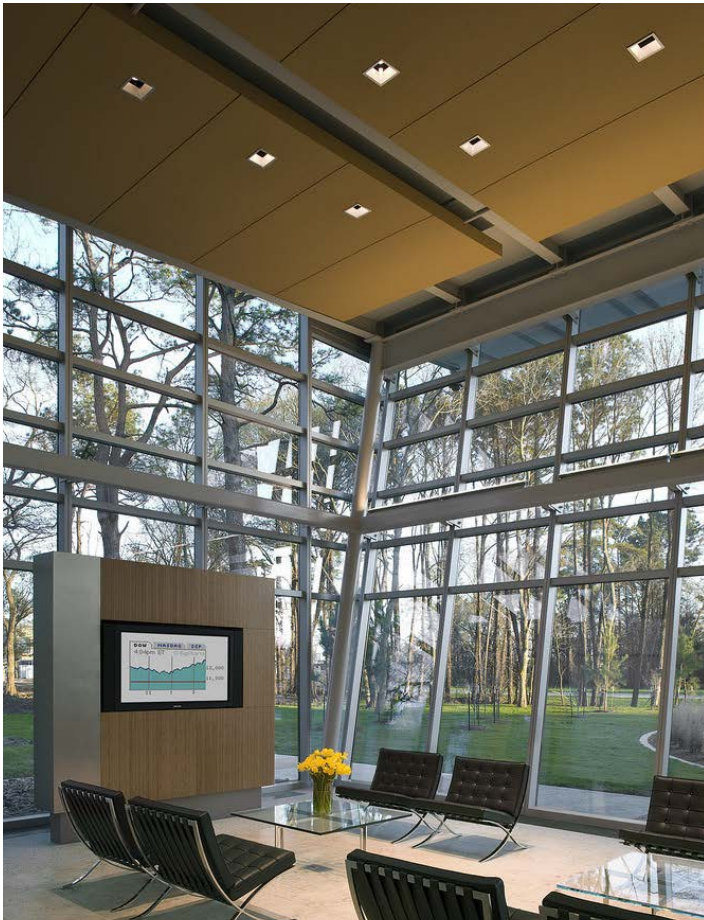








Shell Woodcreek Campus • Houston, TX



Precisely cut, optically precise luminaires designed for the  
clean-lined, Mondrian-like TechZone ceiling, ideal  
for modernizing open plan spaces

Aperture	3", 4"
Functionality	Downlight, Wallwash
CRI	Up to 98+
Max Lumens	Up to 2500
Ceiling Systems	4" or 6" TechZones Ceilings
Specialty Applications	High Humidity
External Reflector Options	Square   Trim
Reflector Finish	Clear, Diffused Clear, Gold, Black, White, Custom

# ATZ series

ARMSTRONG TECHZONE CEILING



IC-rated luminaire designed  
for direct contact with insulation while  
improving acoustics in confidential spaces



Baccarat Hotel • New York, NY

## EPICseries **Application:** Residential

### INSULATION CONTACT

Aperture	2" • 3" • 4" • 5"
Functionality	Downlight, Adjustable, Wallwash
CRI	Up to 98+
Max Lumens	Up to 2700
Optical Range	14°-60°
Specialty Applications	Wet Location, Marine Grade, High Humidity
External Reflector Options	Round • Square   Trim • Trimless
Reflector Finish	Clear, Diffused Clear, Gold, Black, White, Custom
Listing	IC Rated



Elegantly designed, streamlined profile for sloped ceilings of varying degrees, syncing aesthetics with functionality for the cleanest apertures



Fikeman Hall, BMCC • New York, NY



Aperture	5"
Functionality	Downlight
CRI	Up to 90+
Max Lumens	Up to 5000
Slope Range	5° - 45° in 5° increments
Specialty Applications	Marine Grade, High Humidity
External Reflector Options	Round   Trim
Reflector Finish	Clear, Diffused Clear, Gold, White, Custom

ANGULAR FREEDOM

# SLOPE



Our magnus opus, Spredlite, is a unique wallgrazing system in a class of its own. Preserving iconic architecture, the specially designed optical system of Spredlite produces an immaculate spread of light hidden in a cove or unobtrusively recessed into the ceiling. Spredlite can illuminate such delicate surfaces as a sparkling chain of beads in flux to as substantial and challenging as a specular marble wall. Available in custom lengths, distributions, finishes, with or without baffles, and modifications including curved applications. Spredlite harmonizes architectural elements by draping light over complex vertical surfaces fully and evenly—an effect first designed in 1955 for the Seagram Building, and can be seen in U.S. Embassy in London, MetLife Building, The Regent Hong Kong, and The Museum of Modern Art.



# SpredliteSeries

## WALLGRAZING

Spredlite wallgrazing system expertly illuminates textured or specular surfaces from as complex as an emblem affixed to a travertine wall to as delicate as a glittering chain of beads



The Museum of Modern Art • New York, NY

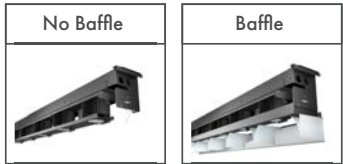
Length	18" - 48"
Modules	2, 3, 4, 5, Custom
CRI	Up to 92+
Max Lumens	Up to 2600
Shielding	Baffle or No Baffle
Shielding Angle	30° down the length of the luminaire (baffle version)
Baffle Finish	Clear, Gold, Black
Mounting Height	10-40'
Made to Order	Curved, Recessed, Tunable White

### Textured

Marble, sandstone, limestone, travertine  
Wood  
Fabric  
Tile  
Plaster or stucco

### Specular

Polished stone  
Metal panels  
Etched glass  
Bead curtain









Infinity, a 2D/3D modular linear/curved lighting system, is unlike any lighting solution Edison Price Lighting has ever before provided—yet it exhibits the classic traits that characterize our lighting: uniquely engineered, elegant, and high-end. Infinity can go virtually anywhere by combining suspended, recessed, surface, and wall mounting in one configuration. Sculpt any shape by connecting rigid linear, curved, twisted, and corner modules. Infinity allows design dreams to take shape—creating a space for one lighting system to address a vast gamut of unique and challenging applications.

# Infinity Series

## LIMITLESS DESIGN

Bend light freely on a multi-dimensional plane.



A 2D/3D modular linear/curved lighting system that merges varied light source directions, mounting styles, and modular pieces to shape light freely on a multi-dimensional plane.

Lumens	750 lm/ft
Efficacy	Up to 125 lm/W
CCT	1900K, 2300K, 2700K, 3000K, 3500K, 4000K, 5000K, 6000K
CRI	80+
Mounting	Pendant, Recessed, Surface, Wall, Combination
Modules	Straight, Curved, 90° Twist Right, 90° Twist Left, 180° Twist, 90° Corner
Configuration Examples	Circle, Quadrilateral, Continuous, 3D, Infinity Loop, Helix, S-shape, U-shape, L-shape, Interconnected Pendant, Custom
Light Source	Curved: Outward, Inward, Downward, Up/Downlight, Inward/Outward Straight: Up or Downlight, Up/Downlight Twist: Combo
Size	1" x 1" or 1.9" x 2.3"
Finish	White, Black, Silver, Custom
Dimming & Controls	Flicker-Free 1% Dimming - 120 or 277V (DIM10), Hi-lume 1% 2-Wire 120V only (LTEA2W), Hi-lume 0.1% EcoSystem w/ Soft-on, Fade-to-Black (HILUME). Consult Factory for Emergency
Max. Distance Between Drivers	One driver for every 16' continuous run
Listing	ISO 9001, RoHS, UL Listed
Lifetime	L70 at 70,000 hrs

### Dimming & Driver Information

DIM10	Flicker-Free 1% DIM10 - 120 or 277V; max 100W per driver
LTEA2W (Lutron)	Hi-lume 1% 2-Wire 120V Forward-Phase Control; 120V only; max 40W per driver
HILUME (Lutron)	Hi-lume 0.1% EcoSystem w/ Soft-on, Fade-to-Black; 120V or 277V; max 90W per driver
Non-Dimming	120V or 277V; max 90W for each driver



718.685.0700 | [www.epl.com](http://www.epl.com) | NY, USA