

A large indoor garden or conservatory with a variety of green plants. A prominent feature is a large, illuminated spiral light fixture that winds through the space, emitting a warm orange glow. The fixture is made of a series of curved, glowing tubes.

FREE- POINT

FreePoint

Monopoint Lighting

Edison Price Lighting
1407 Broadway #2321
New York, NY 10018



All rights reserved. © Edison Price Lighting 2023
Due to continuous product improvements, specifications and dimensions are subject to change without notice.
Consult www.epl.com for most current technical information.

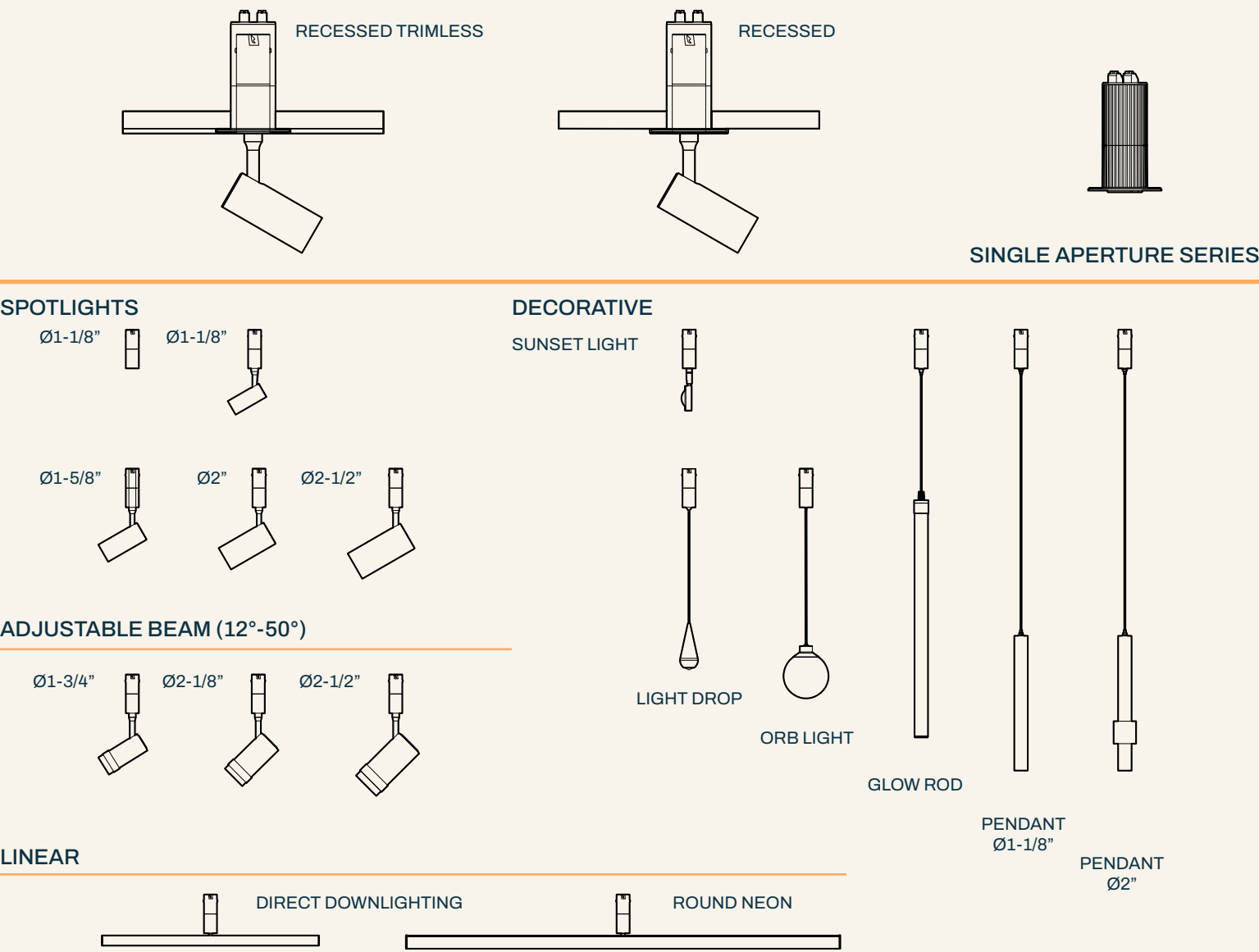
The Art of Adaptive Lighting.

Engineered for flexibility and longevity, FreePoint allows for the seamless integration and reconfiguration of optical modules. Its design is grounded in functionality, featuring a standardized mounting interface that simplifies installation and ensures ease of modification or replacement, all while keeping costs in check. The modules are meticulously designed to blend into ceilings, offering a discreet yet impactful presence.

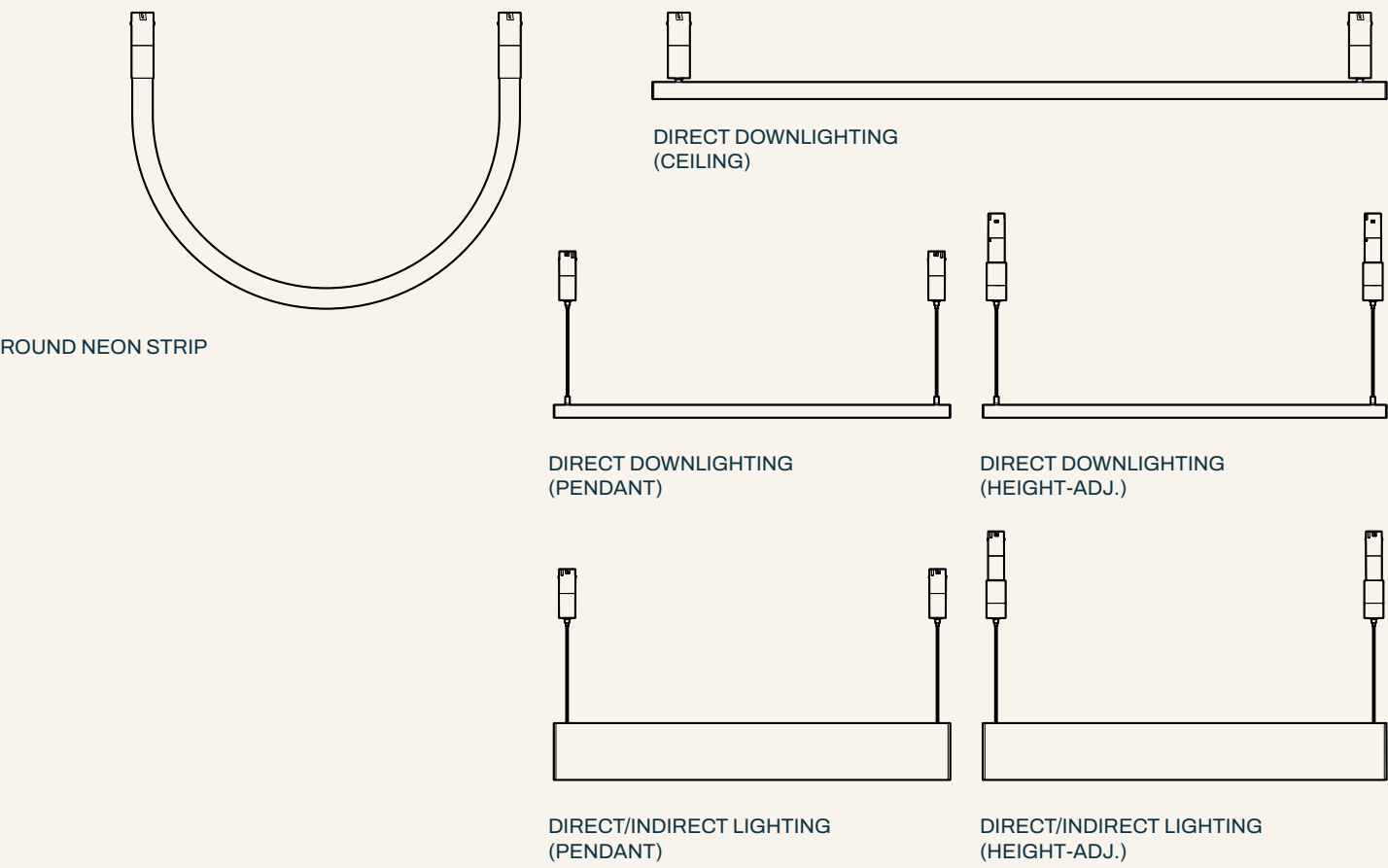
FreePoint is an investigation into the efficiency of design, providing a versatile framework that caters to evolving aesthetic and functional needs without compromising on style.



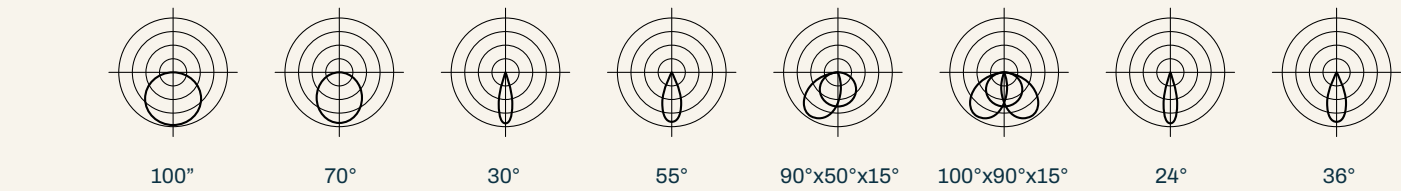
LIGHTING MODULES



DOUBLE APERTURE SERIES



OPTICS





23 modules.

MODULES
Spotlights
Linear
Neon

Ø1,1/8"–Ø2,1/2"
24,1/8"–94,5/8"
39,3/8"–196,1/8"

DIMMING+
CONTROLS
0-10V
DALI-2
TUYA
CASAMBI

CCT
27K
30K
35K
40K

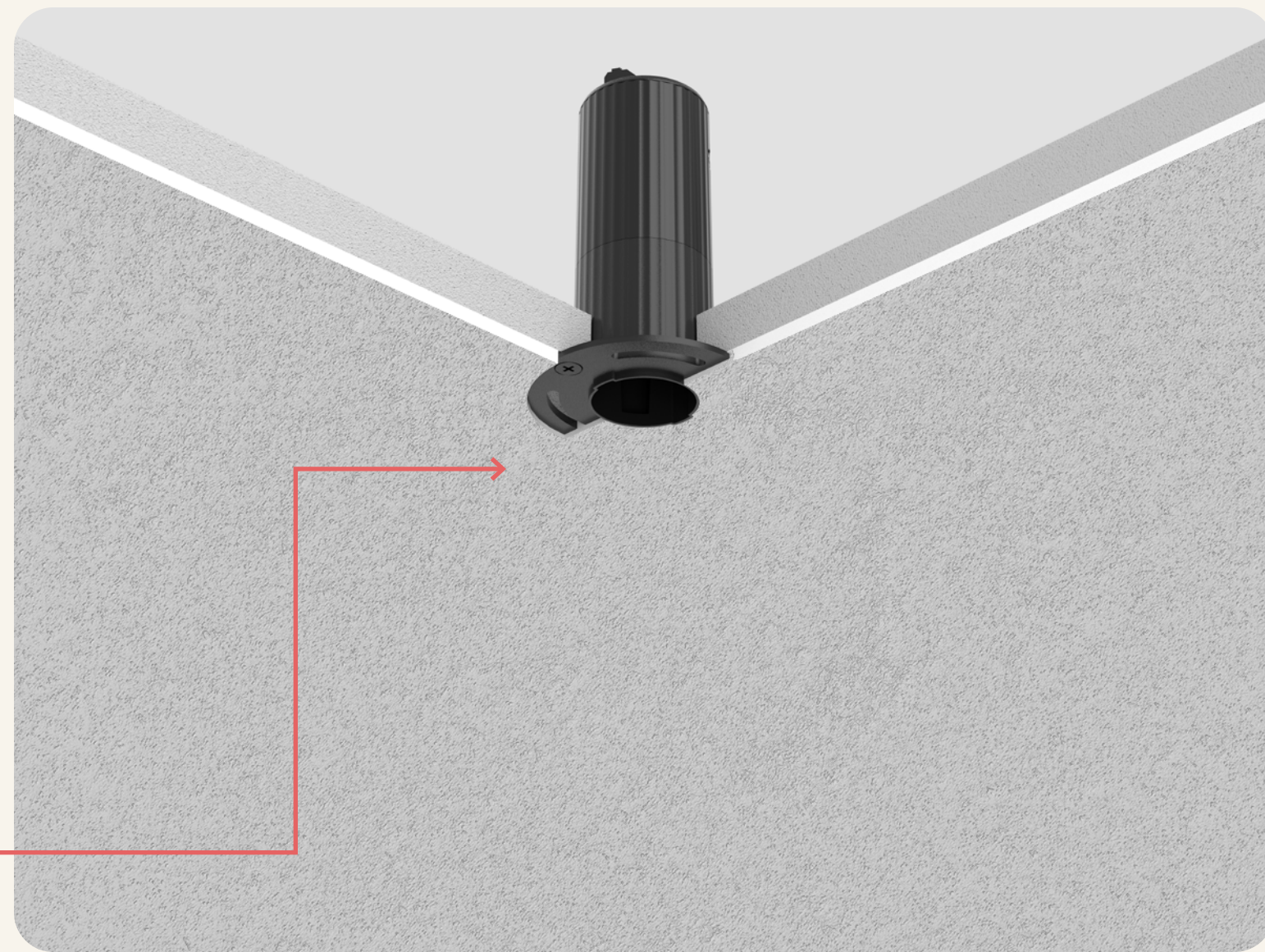
CRI
90+

RECESSED.

FLANGE-LESS



flush-mount

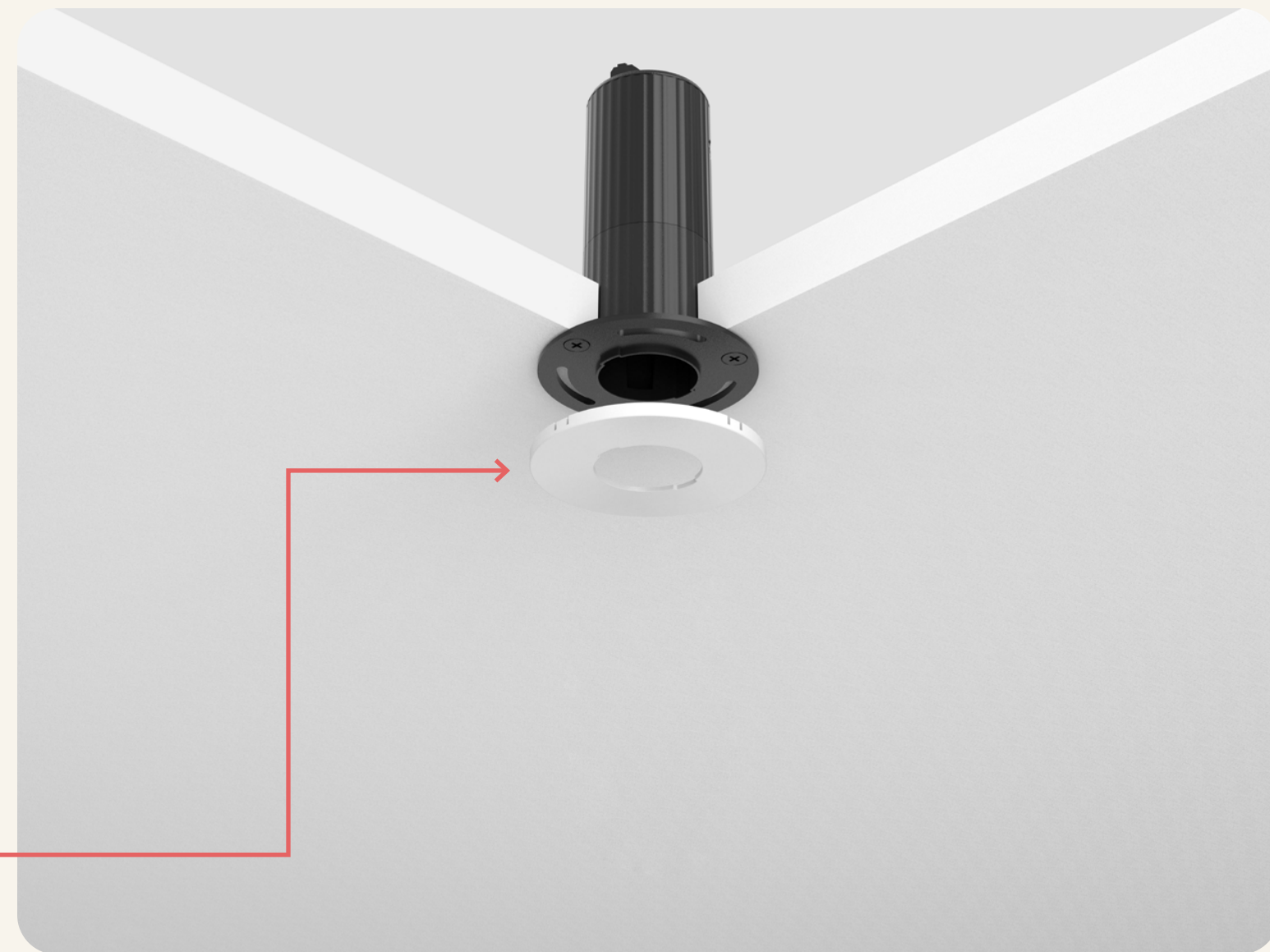


RECESSED.

FLANGED TRIM



recessed
cover



THE BUILD.

base

Maximum Loaded
Weight 18 lbs.

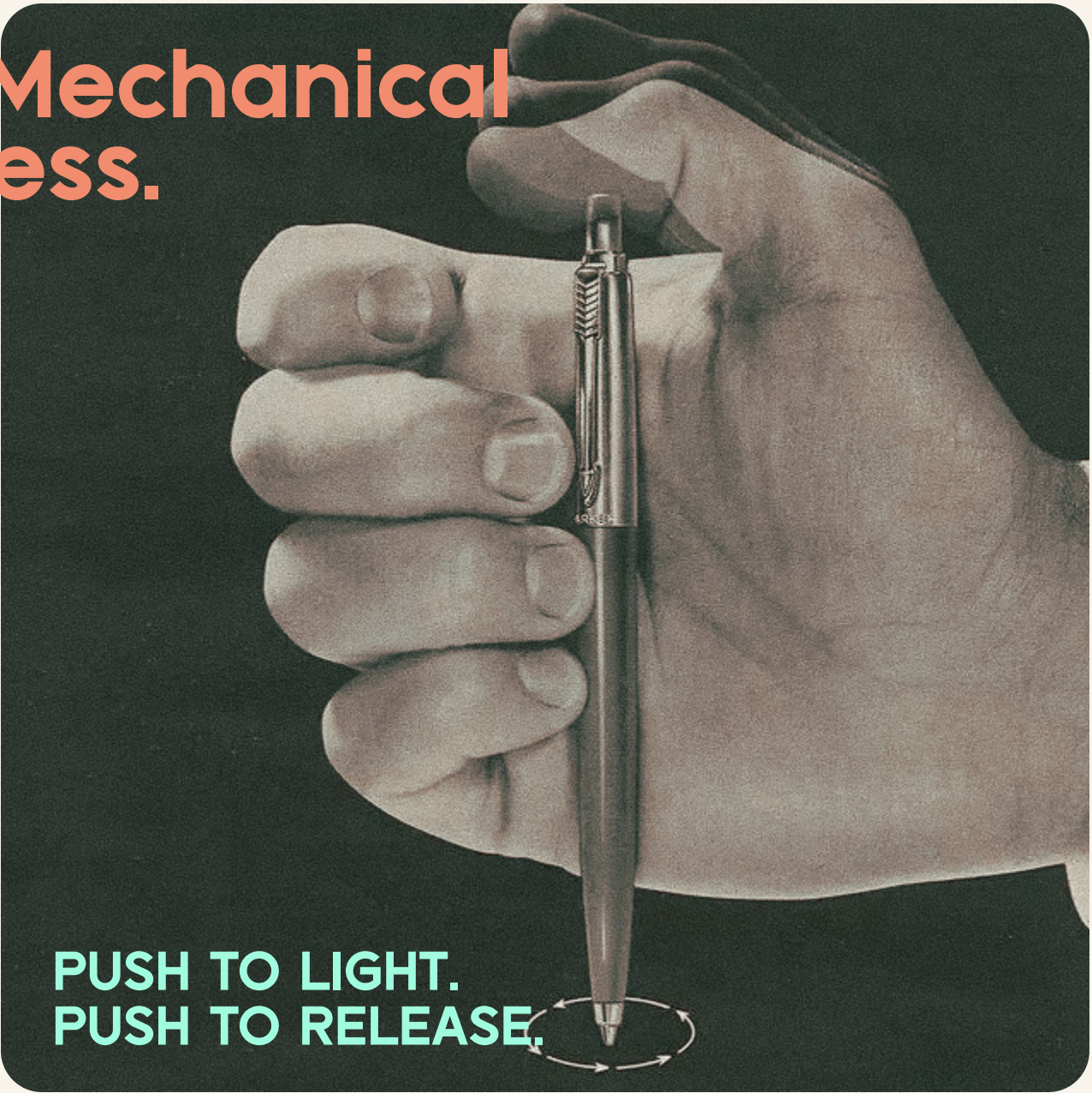
light module

FreePoint's unified interface seamlessly integrates diverse modules into a cohesive system.

This scalability allows for an expanding module collection while maintaining consistent elements.



The Mechanical Process.



© 1963. THE PARKER PEN COMPANY, JANESVILLE, WISCONSIN, USA.

SPOTLIGHTS.

ADJUSTABLE
BEAM!



F-SPZI618

Lumens: 250 lm
Beam Angle: 12°-50°
Size: Ø 1-3/4" x 4"

Black (BK)



F-SPZI622

Lumens: 500 lm
Beam Angle: 15°-40°
Size: Ø 2-1/8" x 4-1/2"

Black (BK)



F-SPZI626

Lumens: 700 lm
Beam Angle: 15°-36°
Size: Ø 2-1/2" x 5-3/8"


Black (BK)



Spotlights.



F-SPI612

Lumens: 300 lm
Beam Angle: 24°, 36°
Size: Ø 1-1/8" x 2-1/8"
 Black (BK)



F-SPI617

Lumens: 500 lm
Beam Angle: 24°, 36°
Size: Ø 1-5/8" x 3-3/8"
 Black (BK)




F-SPI620

Lumens: 1020 lm
Beam Angle: 24°, 36°
Size: Ø 2" x 4-3/4"
 Black (BK)



F-SPI624

Lumens: 1080 lm
Beam Angle: 15°, 24°, 36°
Size: Ø 2-1/2" x 5-3/8"
 Black (BK)

Quiet luxury. Subtle indulgence.

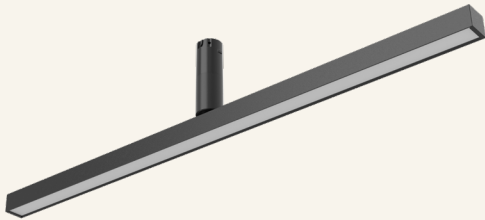
Experience a space where innovation
illuminates life's finer moments.

Our lighting isn't just about seeing better;
it's about feeling more deeply, elevating every
corner with a gentle, human touch.
Here, light is not just a feature;
it's the heartbeat of hushed elegance.



Linear Single-Hole

F-LNSHFD



Sizes(s) & Lumens:	24 inches, 900 lumens 35 inches, 1350 lumens 47 inches, 1800 lumens
Beam Angle:	110°
Finish:	Black (BK)
Lens:	Frosted Diffuser

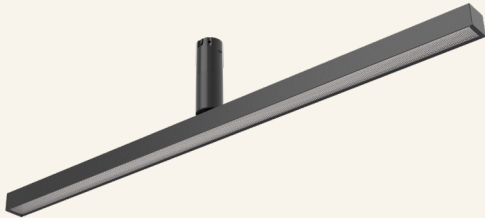
fully rotatable $\pm 355^\circ$

F-LNSHMC



Sizes(s) & Lumens:	26 inches, 910 lumens 51 inches, 1820 lumens
Beam Angle:	30°, 55°
Finish:	Black (BK)
Lens:	Microcell (Grating)

F-LNSHFP



Sizes(s) & Lumens:	24 inches, 960 lumens 35 inches, 1140 lumens 47 inches, 1920 lumens
Beam Angle:	70°
Finish:	Black (BK)
Lens:	Microprismatic

F-LNSHWW



Sizes(s) & Lumens:	24 inches, 1200 lumens 35 inches, 1800 lumens 47 inches, 2400 lumens
Beam Angle:	90° x 45° x 15°
Finish:	Black (BK)
Lens:	Wallwash (Asymmetric)

Frosted Diffuser, Microprismatic, MicroCell,
Wall Wash, Batwing, Wall Grazer



fully rotatable $\pm 355^{\circ}$

F-LNSHBW



Sizes(s) & Lumens:	24 inches, 1200 lumens 35 inches, 1800 lumens 47 inches, 2400 lumens
Beam Angle:	100° x 90° x 15°
Finish:	Black (BK)
Lens:	Batwing (Double Asymmetric)

F-LNWG



Sizes(s) & Lumens:	24 inches, 900 lumens 48 inches, 1800 lumens
Beam Angle:	60° x 25° x 73°
Finish:	Black (BK)
Lens:	Wall Grazer

LINEAR PENDANT

F-LNDHFD



Sizes(s) & Lumens:

47 inches, 1800 lumens
59 inches, 2250 lumens
71 inches, 2700 lumens
95 inches, 3600 lumens

Beam Angle:

110°

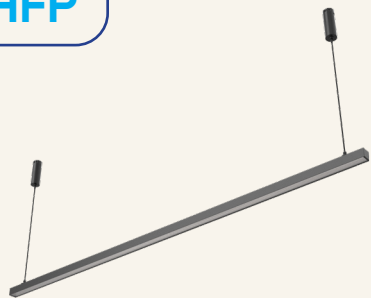
Finish:

Black (BK)

Lens:

Frosted Diffuser

F-LNDHFP



Sizes(s) & Lumens:

47 inches, 1920 lumens
59 inches, 2400 lumens
71 inches, 2880 lumens
95 inches, 3840 lumens

Beam Angle:

70°

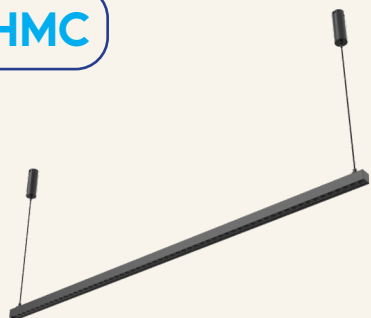
Finish:

Black (BK)

Lens:

Microprismatic

F-LNDHMC



Sizes(s) & Lumens:

51 inches, 1820 lumens
77 inches, 2730 lumens

Beam Angle:

30°, 55°

Finish:

Black (BK)

Lens:

Microcell (Grating)

Frosted Diffuser, Microprismatic, MicroCell



Direct/Indirect Frosted Diffuser, Microprismatic, MicroCell

DOUBLE-HOLE

F-LNCDHFD

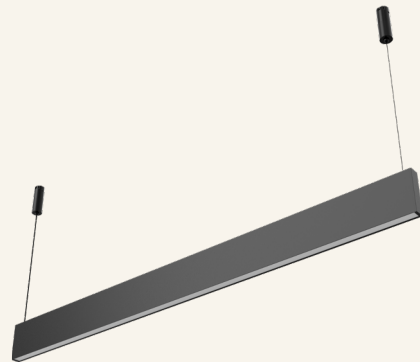
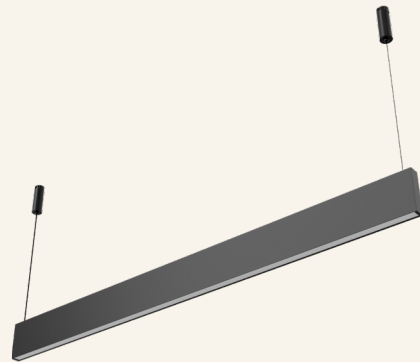
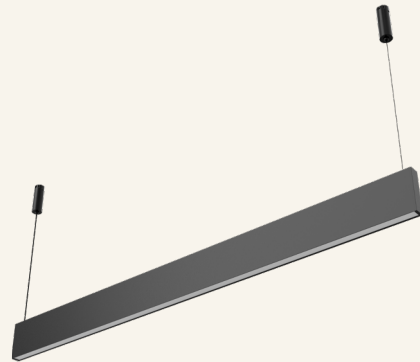
Lens:	Frosted Diffuser
Beam Angle:	110°
Size & Lumens:	48 inches, 2880 lumens
	59 inches, 3600 lumens
	71 inches, 4320 lumens
	95 inches, 5760 lumens
Finish:	Black

F-LNCDHFP

Lens:	Microprismatic
Beam Angle:	70°
Size & Lumens:	48 inches, 2976 lumens
	59 inches, 3720 lumens
	71 inches, 4464 lumens
	95 inches, 5952 lumens
Finish:	Black

F-LNCDHMC

Lens:	Microcell (Grating)
Beam Angle:	30°, 55°
Size & Lumens:	51 inches, 2862 lumens
	77 inches, 4212 lumens



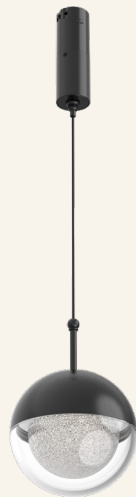
Suspended beauty.

Indulge in the soothing, golden embrace of a sunset, immerse yourself in the graceful ballet of descending water droplets, or surrender to the timeless allure of suspended spheres above.

Allow these enchanting elements to turn your surroundings into a mesmerizing symphony of light and wonder.

DECORATIVE

six options



F-DESPH

Diameter:	4 inches
Lumens:	600 lumens
Beam Angle:	360°
Finish:	Black

F-PI620

Diameter:	2 inches
Lumens:	390 lumens
Beam Angle:	24°, 36°
Finish:	Black

F-RNPI612

Dimensions:	1-1/4 inches 20 inches long
Length:	490 lumens
Beam Angle:	360°
Finish:	Black

F-DESU

Diameter:	4 inches
Lumens:	600 lumens
Beam Angle:	360°
Finish:	Black

F-PI612

Diameter:	2 inches
Lumens:	390 lumens
Beam Angle:	24°, 36°
Finish:	Black

F-DEWP

Dimensions:	1-1/4 inches 20 inches long
Length:	490 lumens
Beam Angle:	360°
Finish:	Black



DOWNLIGHT

Precision, style, and impact combined.

F-DESPH

- Diameter: 1-1/8 inches
- Lumens: 135 lumens
- Beam Angle: 15°, 25°
- Finish: Black

Experience remarkable color accuracy, glare-free comfort, and efficient 3-watt illumination that effortlessly adapts to your needs.

NEON

F-RN16

ONE-INCH
ROUND NEON

Diameter:
1 inch

Lengths &
Lumens:

39 inches, 840 lumens

98 inches, 2100 lumens

197 inches, 4200 lumens

Finish:
Black

FIXED LENGTHS @
39", 98", AND 197"

shape your atmosphere.

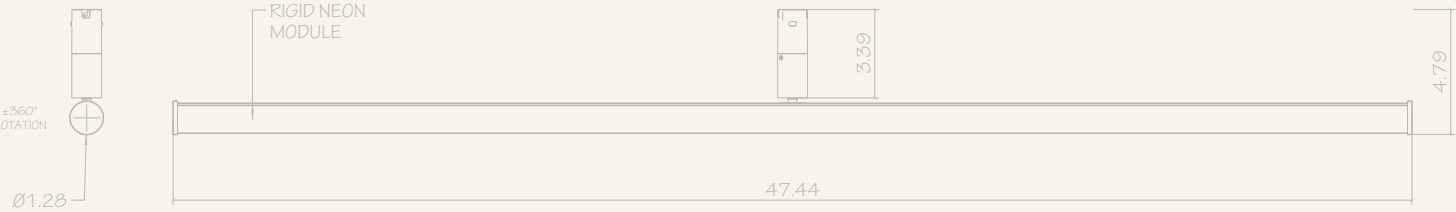
A photograph of a modern interior space. The ceiling is a series of curved, illuminated white lines that create a canopy effect. Below the ceiling, there are several large, lush green plants, including a large fern and a plant with broad, dark leaves. The background shows a wall with vertical wooden slats and a window. The overall atmosphere is warm and contemporary.

curve your
ambiance.

NEON

F-RNT1612

ONE-INCH RIGID NEON



Diameter:

1 inch

Finish:

Black



Lengths &
Lumens:

24 inches, 1200 lumens

36 inches, 1800 lumens

48 inches, 2400 lumens



designed to captivate
and endure