



# EASY-LINK

---

IES Progress Report 2022 Award  
LFI 2022 Design Excellence Award

[www.epl.com](http://www.epl.com)



## APPLICATIONS

Office, Educational Institutes, Hospitals, Warehouses, Retail

## DESCRIPTION

A modular linear lighting system with a twist-on connector for ease of installation in any configuration. The socket rotates from downlight to upright or any angle in-between. Linear sections can be assembled with in-line, T, X, or rectangular modules. Honeycomb or louvered baffles reduce glare potential while providing light output up to 8660 lumens in a 12' section. Easy-Link can be suspended, surface mounted on walls or ceilings or table/floor mounted with a weighted base.

## FEATURES

- Indoor, general lighting
- Available in 4ft, 6ft, 8ft, and 12ft sections with option for continuous row mounting
- High Efficiency at 80 lumens per watt
- 4 unique anti-glare diffuser options to accommodate various aesthetics
- Rigid aluminum housing provides above average ingress protection

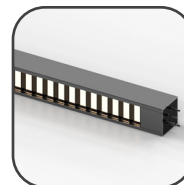
## PERFORMANCE

LUMENS	1000L per ft, 500L per ft
EFFICACY	102 lm/W
CCT	3000K, 3500K, 4000K
CRI	90+
MOUNTING	Surface, Suspension
SIZE	4', 6', 8', 12'
FINISH	Gunmetal, Bronze, Custom RAL
DIFFUSER	Honeycomb, Louver, Multi-Point, Diffuse
DIMMING + CONTROLS	0-10V Flicker-Free 1% dimming 120-277V (DIM10), TRIAC 120V (DIMTR)
LISTING	DLC, UL listed
LIFETIME	60,000 Hours

## DIFFUSER OPTIONS



Honeycomb



Louver

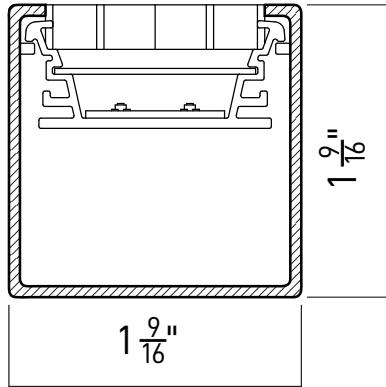


Multi-Point

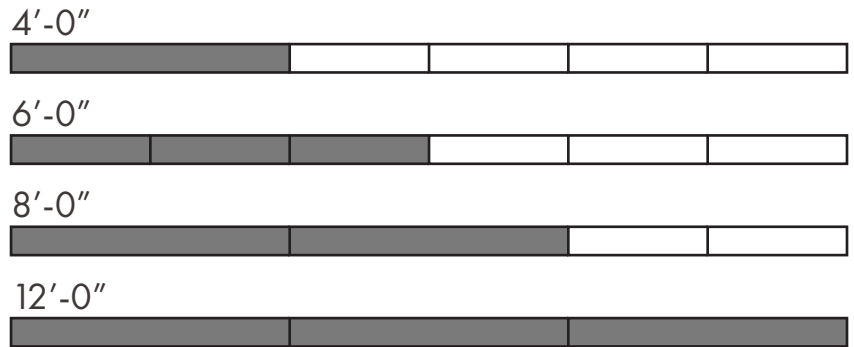


Diffuse

**CROSS SECTION**



**LINEAR RUNS**



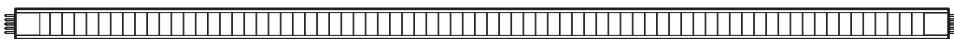
**PROFILE LINE DRAWINGS**

**CONNECTION MODULES**

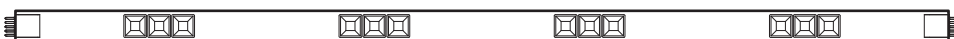
Honeycomb



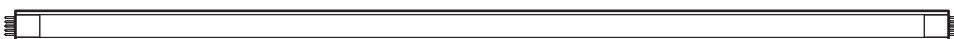
Louver



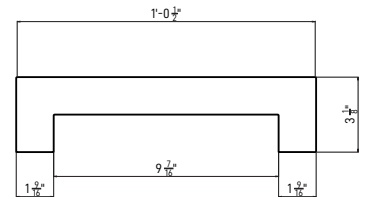
Multi-Point



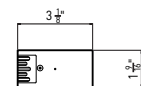
Diffuse



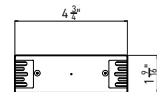
U-end



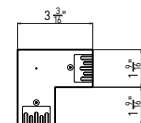
End Cap



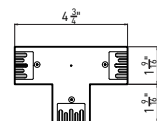
Inline



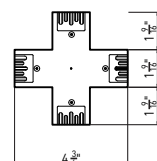
L-End



T-End



X-End



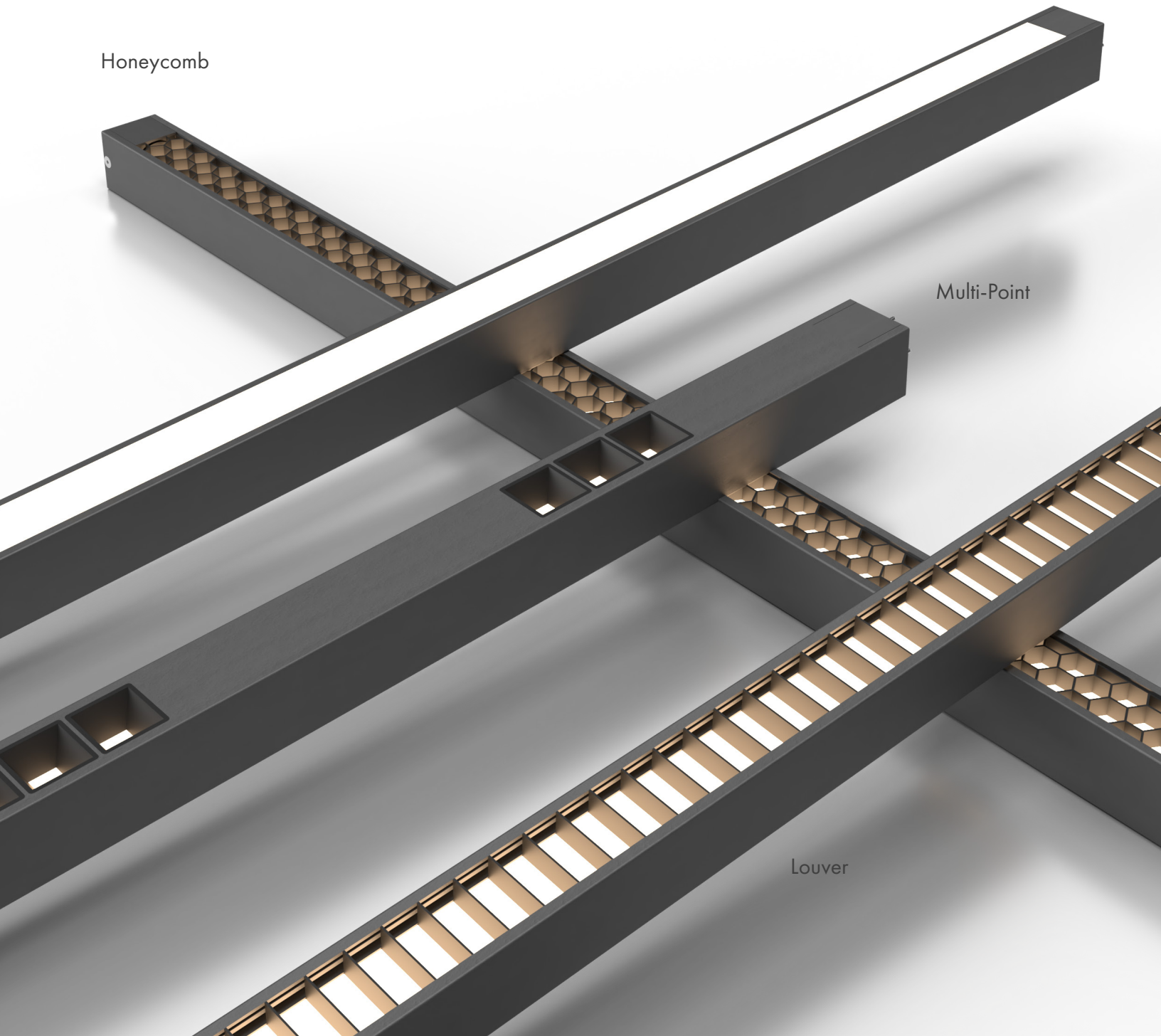
# Linear Diffuser Collection

Diffuse

Honeycomb

Multi-Point

Louver

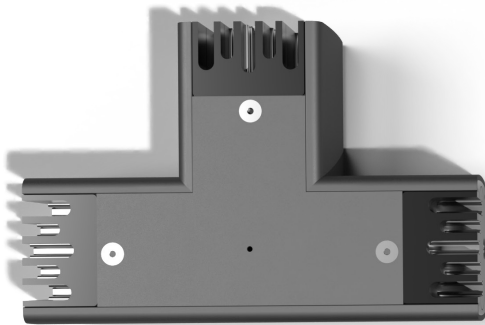
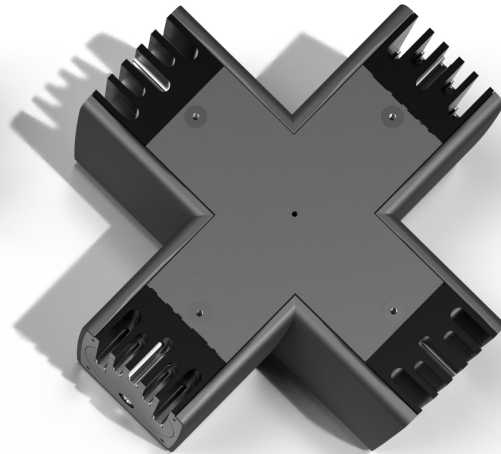


# Connection Modules Collection

L-End



X-End



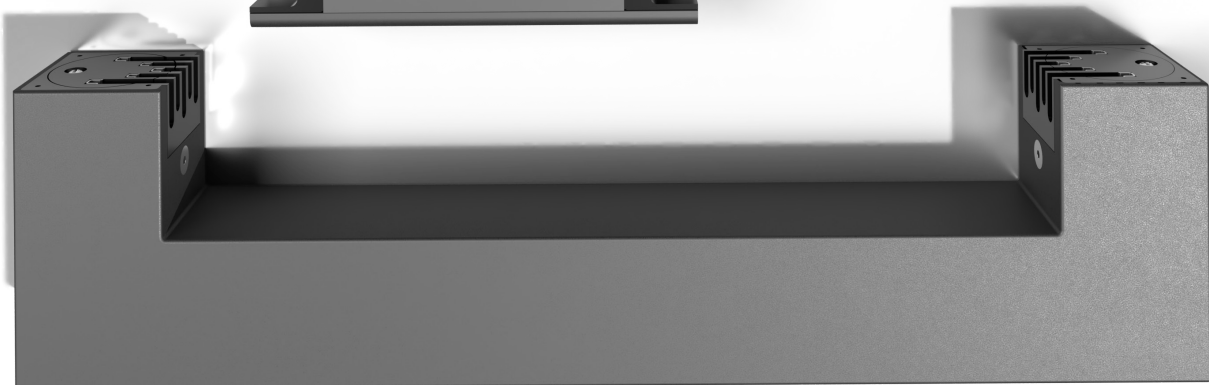
T-End



End Cap

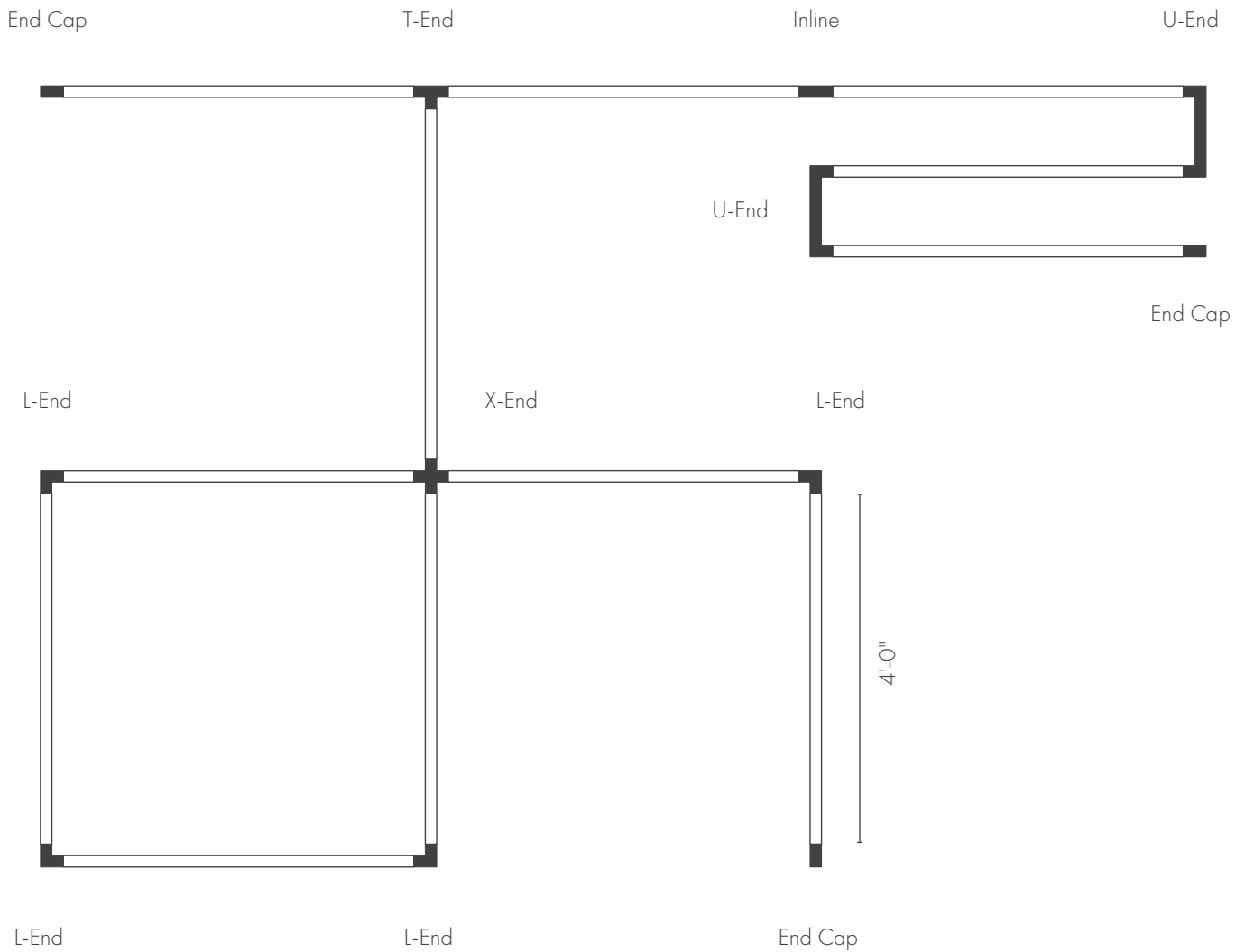


Inline



U-End

# Sample Configurations



\*Configuration chart scale based on 4-foot linear profiles



**ORDERING GUIDE**

EXAMPLE:

**EZL-4-REC-U-1000L-DF-DIM10-MVOLT-30K-90-GM**

01	02	03	04	05	06	07	08	09	10	11
SERIES	LENGTH	SHAPE	END MODULE	LUMENS PER FT.	DIFFUSER	DRIVER	VOLTAGE	CCT	CRI	FINISH
<b>EZL</b> Easy-Link Suspended Luminaire	<b>4</b> 4-foot module <b>8</b> 8-foot module <b>*CUST</b> Custom length (Consult factory)	<b>S</b> Single Run <b>CRM</b> Continuous Row Mount <b>REC</b> Rectangle <b>*CUST</b> Custom Shape	<b>END</b> End Cap <b>CRM</b> Continuous Row Mount <b>U</b> U-End <b>L</b> L-End <b>X</b> X-End <b>T</b> T-End	<b>1000L</b> 1000 lumens per foot	<b>DF</b> Frosted Lens <b>LV</b> Louver <b>HEX</b> Honeycomb <b>MP</b> MultiPoint Downlights	<b>DIM10</b> 0-10V Dimming down to 1% <b>NONDIM</b> Non-Dimming	<b>MVOLT</b> 120-277V	<b>27K</b> <b>30K</b> <b>35K</b> <b>40K</b> <b>60K</b>	<b>90</b> 90+ CRI	<b>GM</b> Gunmetal

12

**OPTIONS**

**SRF**  
Surface Mount  
Installation



Lounge



*Office*



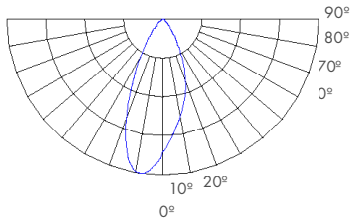


**EASYLINK-OPTIC**

TEST NO: **EL07122230**

INPUT WATTS: **34.8525**    LUMENS: **2984**    CRI: **90**    EFFICACY: **86**    CCT: **4000K**    SPACING CRITERION: **0.74**

Candlepower Distribution Curve (Candelas)



**ZONAL LUMEN SUMMARY**

Zone	Lumen	%Lamp	%Fixt
0-20	1407.22	47.20	47.20
0-30	2300.49	77.10	77.10
0-40	2768.47	92.80	92.80
0-60	2982.51	99.90	99.90
0-80	2984.11	100.00	100.00
0-90	2984.2	100.00	100.00

**LUMINANCE DATA (cd/sq.m)**

Angle In Degrees	Average 0-Deg	Average 45-Deg	Average 90-Deg
45	3757	4942	5056
55	400	1303	945
65	8	29	16
75	6	6	6
85	12	15	17

**ZONAL LUMEN SUMMARY**

Zone	Lumen	CANDELA TABULATION
0-10	411.59	0 4423.786
10-20	995.63	5 3878.020
20-30	893.27	15 2778.410
30-40	46798	25 1426.620
40-50	176.28	35 558.960
50-60	37.77	45 13.660
60-70	1.49	55 0.210
70-80	0.11	65 0.100
80-90	0.09	75 0.060
		85 0.060
		90 0.060

**COEFFICIENTS OF UTILIZATION**

CW RW	80				70				50				30				10				0			
	70	50	30	10	70	50	30	10	50	30	10	50	30	10	50	30	10	50	30	10	0	0		
0	119	119	119	119	116	116	116	116	111	111	111	106	106	106	102	102	102	102	102	102	100	100		
1	114	111	109	107	111	109	107	105	105	103	102	101	100	99	98	97	96	96	96	96	94	94		
2	109	104	100	97	106	102	99	96	99	96	94	96	94	92	93	92	90	92	90	90	88	88		
3	104	97	93	89	102	96	92	88	93	90	87	91	88	86	89	86	84	86	84	83	83	83		
4	99	92	86	82	97	90	86	82	88	84	81	86	83	80	85	82	79	82	79	78	78	78		
5	94	86	81	77	92	85	80	76	84	79	76	82	78	75	80	77	74	74	74	73	73	73		
6	90	81	76	72	88	81	75	71	79	74	71	78	74	71	76	73	70	70	69	69	69	69		
7	86	77	71	67	84	76	71	67	75	70	67	74	70	66	73	69	66	66	66	65	65	65		
8	82	73	67	63	81	72	67	63	71	66	63	70	66	63	69	65	63	63	63	61	61	61		
9	78	69	64	60	77	69	63	60	68	63	60	67	63	59	66	62	59	58	58	58	58	58		
10	75	66	60	57	74	65	60	57	65	60	57	64	60	56	63	59	56	55	55	55	55	55		