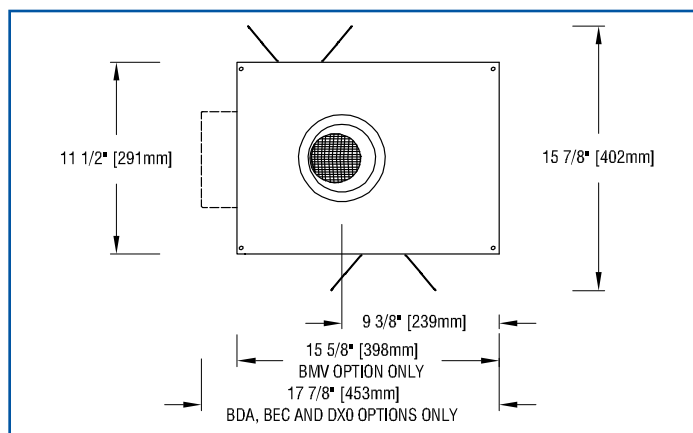
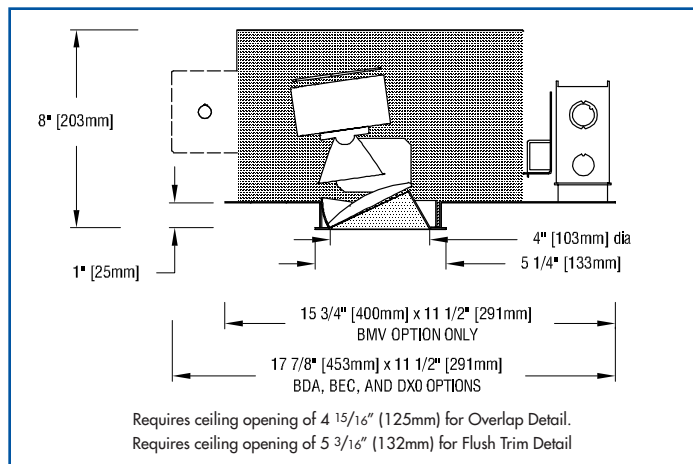


MOOD MASTER™/4 WL

recessed color tuning wallwasher



- **Luminaire is commissioned by Lumenetix Araya Tunable Color 2.0 iOS app.** Wireless commissioning of LED array and programming of Sceneset is done via an embedded Bluetooth radio. Tunable parameters include:
 - on /off
 - CCT range of 1650K to 8000K
 - dimming 100% to 0.1% at constant CCT
 - hue (defines color, i.e. red, orange, yellow, green...white)
 - saturation (defines the intensity of the color chosen)
- **Luminaire may be equipped for use on a 3-wire circuit controlled by one of a number of dimming protocols.**
- **The optical assembly consists of two internal reflectors and a 40° x 70° glass spread lens.** Assembly may be rotated 363°, oriented as desired and locked in place. Precise design provides uniform illumination on vertical surfaces up to the ceiling line and minimizes aperture brightness.
- **An optional holder accessory permits the use of one of a number of [Optical Accessories](#) including color filters and screens.**
- **Reflectors are available in three clear natural aluminum finishes** — semi-specular (C), — slightly diffuse (V) or fully diffuse (EC) — as well as champagne gold or black Alzak®. Other finishes available on special order.
- **Luminaire includes a pair of mounting bars (3/4" x 27" C channel).** Specialty bars for wood joists and T-bar installations are also available.
- **For more information, [click here](#).**

APPLICATIONS

Luminaire is suitable for interior spaces wherever control of the color and intensity of light will enhance the experience of the occupants.

Luminaire is listed for Damp Location and is RoHS compliant. Luminaire is prewired with thermal protector, approved for ten #12 wire 90° branch circuit pull-through wiring, and suitable for use in a fire rated ceiling. Removal of the reflector allows access to the junction box.

Mood Master/4 WL is a 4" aperture, color tuning wallwasher powered by a Lumenetix® araya® LED module that produces 90+CRI white light (within 2-step MacAdam ellipse).

PRODUCT CODE

For complete product code, list basic unit and select one item from each following box.

Basic Unit FH-CTM2-4WL

Light Source Output

1200 lumens L12
2000 lumens L20

Control Options

Controlled by two 0-10V dimmers, one for CCT tuning and one for dimming to 1% - BMV
Controlled by Lutron ECoSystem for CCT tuning and dimming to 1% - BEC
Controlled by DALI controllers for CCT tuning and dimming to 1% - BDA
Controlled by a DMX controller for CCT, hue and saturation tuning, and dimming to 0.1; equipped with two CAT5e connectors for "Daisy-Chain" control wire connections using CAT5e cables (150' max cable length) between controller and last fixture in chain - DXO

Voltage

120 volt service 120
277 volt service 277

Reflector Color and Detail

	Overlap	Trim Flush*
Semi-specular clear	COL	CTF
Slightly diffuse Clear	VOL	VTF
Fully diffuse Clear	ECOL	ECTF
Champagne Gold	GOL	GTF
White	WOL	WTF
Black	BOL	BTF

Other reflector finishes available on special order.

Standard reflector flange continues reflector finish. White painted flanges and custom painted flanges are available on special order. Add WF (white flange) or CCF (custom color flange).

*Trim Flush reflector trim requires the use of a **plaster ring** Accessory (see below).

► Reflectors detailed for metal or wood ceilings available on special order.

ACCESSORIES Specify as separate line item.

holder for one Optical Accessory (see over) - XSM OA HLDR
Plaster ring allows use of 4 7/8" OD Trim Flush (TF)
reflector in sheetrock ceiling: 5 3/16" dia hole required - TF RING/4

OPTICAL ACCESSORIES Specify as separate line items

For use only with the "holder for Optical Accessory" accessory.

All are 3 3/4" (95mm) diameter. Filters are glass; screens are aluminum.

33% light reduction screen SCR33/3.75
50% light reduction screen SCR50/3.75

color filters

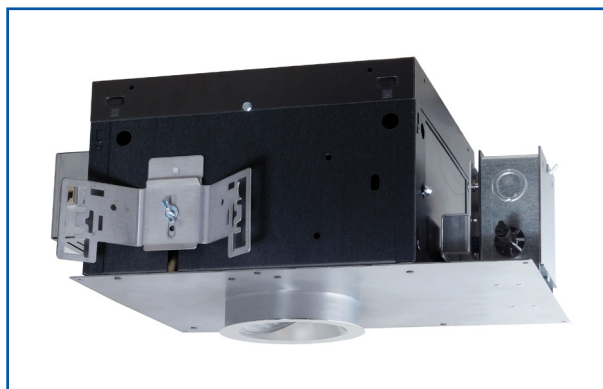
Surprise Pink PNK/3.75
Daylight Blue DAY/3.75
amber AMB/3.75
blue BLU/3.75
green GRN/3.75
red RED/3.75




41-50 22ND STREET, LIC NY 11101 TEL 718.685.0700 FAX 718.786.8530 www.epl.com

©Copyright, Edison Price Lighting 2019

LED 0092 3:19

**PHOTOMETRIC REPORT** (TESTED PER IESNA LM-79-2008)

Prorated from  Leading Testing Laboratories Report No. UT18080004-4. Original test report furnished upon request.

Luminaire recessed LED round lensed wallwasher

Lamp Lumenetix CTM2 LED Engine, 2000 lumens, 90+ CRI, with 60° beam spread integral reflector

Lamp Life rated 50,000 hours based on L70/B50 criteria. LM80 report by LED manufacturer furnished upon request

WALLWASH INFORMATION

Distance From Ceiling (Feet)	2' 6" From Wall; 2' 6" O.C.		3' From Wall; 3' O.C.		3' 6" From Wall; 3' 6" O.C.	
	Below Fixture	Between Fixtures	Below Fixture	Between Fixtures	Below Fixture	Between Fixtures
1	26	22	16	14	10	9
2	44	39	28	24	18	16
3	40	38	31	28	23	20
4	30	29	25	25	21	20
5	21	20	20	19	17	17
6	15	14	15	14	14	13
7	10	10	11	11	11	10
8	8	7	8	8	8	8
9	6	6	6	6	6	6
10			5	5	5	5

All vertical footcandles are initial values with no contribution from walls, ceiling or floor reflectance. Computation performed with a total of five wallwashers. Fixtures were modeled with maximum candlepower at 15° above vertical.

DRIVER INFORMATION (UL Class 2, dry and damp location)

Voltage	120	277
Max. Input Watts (2000 lumens/1200 lumens)	33/22	33/22
Max. Input Current (A) (2000 lumens/1200 lumens)	.28/.18	.12/.08
Min. Power Factor	>0.9	>0.9
Operating Temperature Range (F)	-4 to 122	-4 to 122

LUMINAIRE LIGHT OUTPUT AND EFFICACY

LED Light Engine	Luminaire Light Output	Luminaire Efficacy (lms/watt)	System Wattage
2000 Lumens	690	26	33
1200 Lumens	428*	27*	22

*estimated values

REFLECTOR COLOR MULTIPLIERS

Semi-specular clear (C)	1
Slightly diffuse clear (V)	.95
Fully diffuse clear (EC)	.88
Champagne gold clear (G)	.95
Black (B)	.49

LIGHT OUTPUT MULTIPLIER

(Based on 2000 lumens LED)

LED Light Engine	Light Output Multiplier
2000 Lumens	1
1200 Lumens	0.62*

*estimated values