

# UNICEP® RR 9.75

recessed track unit

TRACK  
SYSTEMS  
10-123

## FEATURES

Unicep RR 9.75 is a length of recessed SightLine RR track designed to accept and electrify a single 120-volt Edison Price Lighting track fixture.

Unicep® RR 9.75 is specifically designed for installation in carefully finished sheetrock ceilings employing either ½" thick or 5/8" thick sheetrock. Installed, Unicep RR is entirely concealed, presenting only a ¾" wide opening for the insertion of a track fixture.

Unicep RR 9.75 is intended for locations where the lighting program calls for the *occasional* use of a single track fixture. For sites requiring the *permanent* mounting of a single track fixture, we recommend the use of an outlet box mounted (–OBM) version of the track fixture.

Unicep RR 9.75 is mounted to the ceiling structure by means of mounting bars (by others) in the same manner as recessed lighting fixtures. Unit is equipped with two sets of adjustable mounting brackets with each set mounted to a batten that is, itself, capable of ½" of vertical adjustment, for increased adaptability to ceiling conditions.

Unicep RR 9.75, like other Edison Price Lighting track products, is designed so that it completely contains the adapter of the track fixture. This feature allows the track fixture to hang free of unsightly screws, levers or knobs.



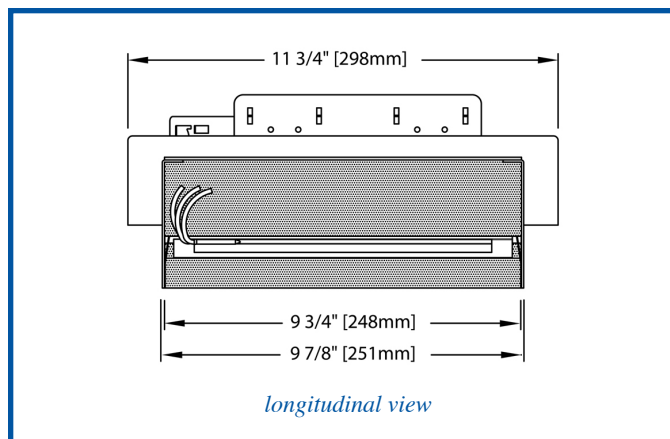
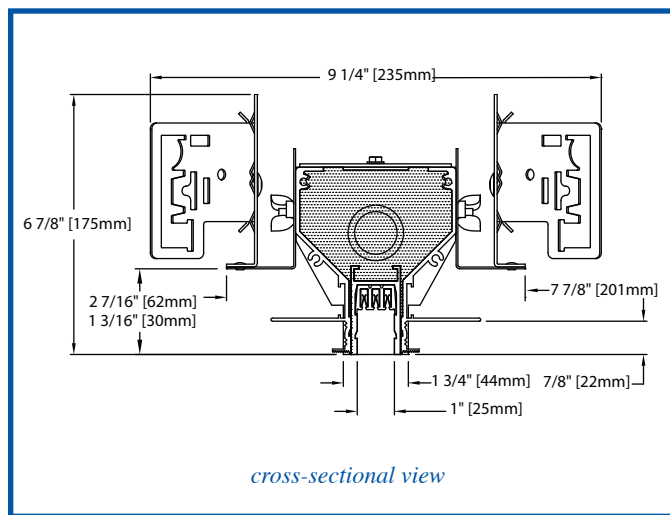
## APPLICATIONS

Unit is recommended for museums, galleries, showrooms, retail stores, offices, schools or residences – wherever adjustable wallwash or accent lighting is occasionally required.

Unit is designed to support and power a single Edison Price Lighting track fixture prepared for 20-amp, 120-volt service.

Unit is 3-conductor and grounded. It is supplied by one 120 volt, 20 amp branch circuit. Total capacity is 20 amps. Service wire must be #12 AWG solid wire. Removal of the spring-mounted track component allows access to the splice compartment.

Unit is cULus listed for indoor use only.



## PRODUCT CODE

Complete Product Code..... UCP-RR-9.75

**Unicep RR 9.75** accepts all Edison Price Lighting 120-volt track fixtures.

► A Unicep RR 9.75 modified for use in ceilings of machine-cut metal or wood panels is available on special order.



