

Project

Date Product Code

Type

Designer



WAFER/2 AA

recessed shallow LED accent light

FULLY SUSTAINABLE – FULLY SUSTAINABLE – FULLY SUSTAINABLE – FULLY SUSTAINABLE – FULLY SUSTAINABLE – FULLY SUSTAINABLE – FULLY SUSTAINABLE



slot aperture shown

FEATURES

- **WAFER/2 AA is a 2" aperture LED accent light** with an overall depth of 4" (housing depth of 3" plus a 1" throat).
- **Luminaire provides 365° rotation and 0°-30° angular adjustment.** Once focused, adjustment may be locked by a lever and a thumb nut.
- **Luminaire employs an internal spring-loaded lens** to produce an initial beam-spread of either 12°, 20° or 36°. To allow beamspread to be changed in installed luminaires, internal lenses are available as accessories.
- **Luminaire is powered by one of a number of Cree Chip on board LED's.** See below for wattages and efficacies.
- Luminaire is available with **four kinds of LightPlate trim**:
 - with a slot aperture and no lens (- AL)
 - with a slot aperture and prismatic lens (- AL-PRS)
 - with a round aperture and no lens (- AP)
 - with a round aperture and prismatic lens (- AP-PRS)
- **LightPlate trim with white finish** standard. Custom color finish available on special order.
- **Optional housing design for residential installation** in wood joist ceilings (- RI).
- **WAFER/2 AA includes a pair of mounting bars** (3/4" x 27" C channel). Specialty bars for wood and T-bar installations are also available.
- **For more information, [click here](#).**

APPLICATIONS

Luminaire is listed as an inherently protected luminaire for Damp Location. Luminaire is RoHS compliant, is suitable for use in a fire rated ceiling. Removal of the external reflector allows access to the LED module and junction box.



round aperture shown

PRODUCT CODE

For complete product code, list basic unit and select one item from each following box.

Basic Unit standard installation design W2-CLT-AA

Internal Lens *Choose one.*

12° initial beamspread - 12D
 20° initial beamspread - 20D
 36° initial beamspread - 36D

Light Source Output (Lumens)

800 lumens / CRI 90+ 4000K not available - L08H
 1000 lumens 4000K not available - L10H
 1200 lumens 4000K not available - L12H
 1000 lumens / CRI 80+ - L10S
 1200 lumens - L12S
 1500 lumens - L15S

Driver

dimmable to 1% by a 0-10V dimmer on 120 Or 277-volt service - DMV
 dimmable to 5% by either an incandescent or electronic low voltage dimmer only; 120-volt service only - DMP
 dimmable to 1% by a 2-wire Lutron compatible dimmer - DMILU
 dimmable to 1% SoftOn/FadeToBlack by a Lutron EcoSystem control - ECO-LU
 eldoLED 0-10V (Logarithmic) driver dimmable to 0.1% with a 0-10V dimmer - DV0ELG
 eldoLED 0-10V (Linear) driver dimmable to 0.1% with a 0-10V dimmer - DV0ELN
 eldoLED driver dimmable to 0.1% with DALI control system - DA0-EL
 dimmable to 0.1% by a Zigbee wireless network (Daintree, Encelium or Wink); wireless range 50' through standard walls; available with L12H or L15S models only - ZGOMAG

Light Color

2700 K - 27K
 3000 K - 30K
 3500 K - 35K
 4000 K - 40K

LightPlate	Overlap (OL)	Trim Flush (TF)*
slot aperture, no lens	AL-OL	AL-TF
slot aperture with prismatic lens	AL-PRS-OL	AL-PRS-TF
round aperture, no lens	AP-OL	AP-TF
round aperture with prismatic lens	AP-PRS-OL	AP-PRS-TF

Standard LightPlate white finish. Add - CC for custom color.
 *Trim Flush LightPlate requires the use of a plaster ring Accessory (see below).

OPTIONS

Specify by adding to the basic unit.

Housing designed for residential installation (see next page) including a pair of mounting bars (extendable to 20") for use between wood joists. - RI

Milwork trim detail consists of an aperture collar (see below) and a Trim Flush (TF) external reflector (see above).

milled aluminum aperture collar - M
 white aperture collar - MWH
 black aperture collar - MBL
 custom color aperture collar - MCC

Remote emergency battery pack including two components - battery pack and plate with test switch and light - to be mounted adjacent to luminaire; for use in accessible ceilings; not available with residential housing (-RI). - RX

EXTRA INTERNAL LENSES

Specify as separate line items.

12° internal lens CLT-LENS12-50
 20° internal lens CLT-LENS20-50
 36° internal lens CLT-LENS36-50

ACCESSORIES

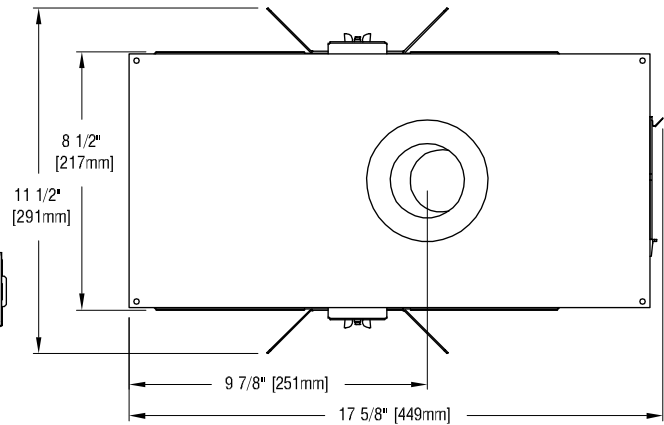
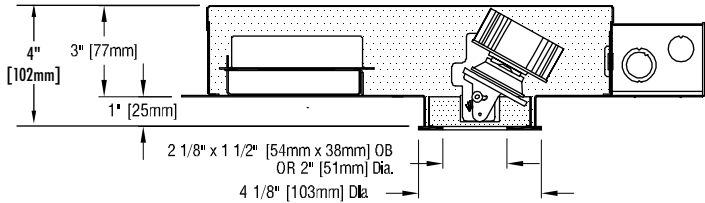
Specify as a separate line item.

Plaster ring allows use of 3 3/4" OD Trim Flush (-TF) reflector in sheetrock ceiling; 4" dia hole required TF RING/3

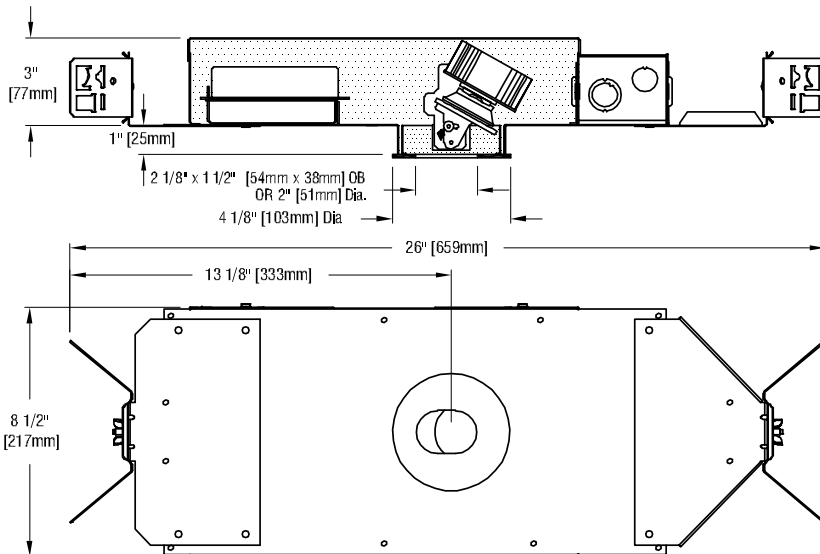


STANDARD INSTALLATION DESIGN

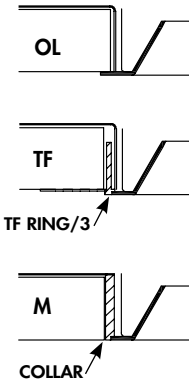
Requires ceiling opening of 3 3/4" (95mm) for Overlap Detail.
 Requires ceiling opening of 4" (102mm) for Trim Flush Detail.
 Requires minimum ceiling opening of 3.90" (99mm) for Millwork Trim Detail.



RESIDENTIAL INSTALLATION DESIGN (-RI)



EXTERNAL REFLECTOR TRIM DETAILS



STANDARD DMV DRIVER INFORMATION (UL Class 2, dry and damp location)

Voltage	120	277
Input Watts (L108H/L110H/L12H/L10S/L12S/L15S)	9/10/13/9/10/13	9/10/13/9/10/13
Input Current (A) (L108H/L110H/L12H/L10S/L12S/L15S)	08/08/11/08/08/11	04/04/06/04/04/06
Output Current (mA)	350-700	350-700
Min. Power Factor	.99	.99
Operating Temperature Range (F)	-13 to 122	-13 to 122

LIGHT OUTPUT MULTIPLIER

LED Light Engine	Light Output Multiplier	RX Light Output Multiplier
800 Lumens 90 CRI	0.84*	.55
1000 Lumens 90 CRI	1	.55
1200 Lumens 90 CRI	1.23*	.55
1000 Lumens 80 CRI	1.04*	.67
1200 Lumens 80 CRI	1.24*	.67
1500 Lumens 80 CRI	1.53*	.67

*estimated values

REFLECTOR COLOR MULTIPLIERS

Slightly diffuse clear (V)	1
Fully diffuse clear (EC)	.90
Champagne gold clear (G)	1
Specular white (W)	.70
Black (B)	.40

– photometrics continued below –

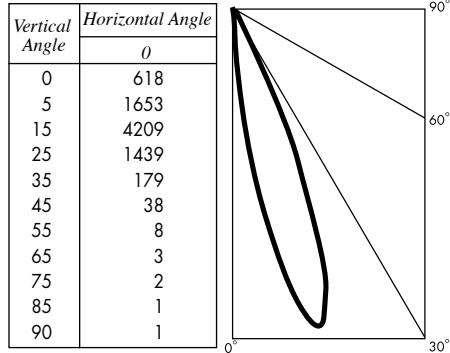


PHOTOMETRIC REPORT with 12° lens (tested per IESNA LM-79-2008)

Verification Services Report No. 11863545.01. Original test report furnished upon request.

Luminaire recessed LED round accent light with slot aperture plate trim and prismatic lens, LED aimed at 15° above vertical.+
 Light Source Cree CXB1310 LED with 12° beam spread integral lens, 2700K CCT, 90 CRI, 1000 lumens

CANDLEPOWER DISTRIBUTION (Candela)



LUMINAIRE LIGHT OUTPUT AND EFFICACY

LED Light Engine	Luminaire Light Output	Luminaire CBCP	Luminaire Efficacy (lms/watt)	System Wattage	RX Light Output (90 min. run)
800 Lumens 90 CRI	404*	3536*	45*	9	264*
1000 Lumens 90 CRI	481	4209	47	10	264*
1200 Lumens 90 CRI	591*	5177*	45*	13	264*
1000 Lumens 80 CRI	500*	4377*	56*	9	322*
1200 Lumens 80 CRI	596*	5219*	60*	10	322*
1500 Lumens 80 CRI	735*	6440*	57*	13	322*

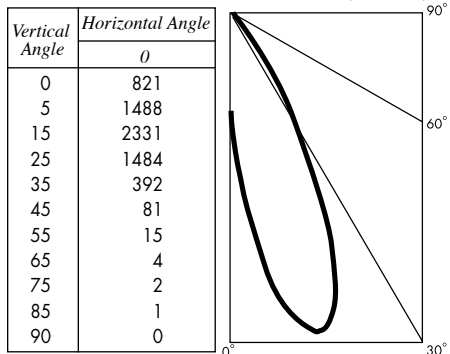
*estimated values

PHOTOMETRIC REPORT with 20° lens (tested per IESNA LM-79-2008)

Verification Services Report No. 11863545.02. Original test report furnished upon request.

Luminaire recessed LED round accent light with slot aperture plate trim and prismatic lens, LED aimed at 15° above vertical.+
 Light Source Cree CXB1310 LED with 20° beam spread integral lens, 2700K CCT, 90 CRI, 1000 lumens

CANDLEPOWER DISTRIBUTION (Candela)



LUMINAIRE LIGHT OUTPUT AND EFFICACY

LED Light Engine	Luminaire Light Output	Luminaire CBCP	Luminaire Efficacy (lms/watt)	System Wattage	RX Light Output (90 min. run)
800 Lumens 90 CRI	430*	1958*	48*	9	281*
1000 Lumens 90 CRI	512	2331	50	10	281*
1200 Lumens 90 CRI	629*	2867*	48*	13	281*
1000 Lumens 80 CRI	532*	2424*	59*	9	343*
1200 Lumens 80 CRI	634*	2890*	63*	10	343*
1500 Lumens 80 CRI	783*	3566*	60*	13	343*

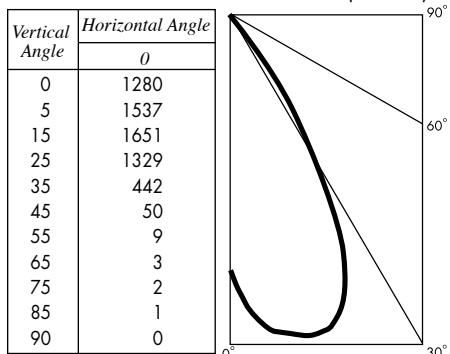
*estimated values

PHOTOMETRIC REPORT with 36° lens (tested per IESNA LM-79-2008)

Verification Services Report No. 11863545.03. Original test report furnished upon request.

Luminaire recessed LED round accent light with slot aperture plate trim and prismatic lens, LED aimed at 15° above vertical.+
 Light Source Cree CXB1310 LED with 36° beam spread integral lens, 2700K CCT, 90 CRI, 1000 lumens

CANDLEPOWER DISTRIBUTION (Candela)



LUMINAIRE LIGHT OUTPUT AND EFFICACY

LED Light Engine	Luminaire Light Output	Luminaire CBCP	Luminaire Efficacy (lms/watt)	System Wattage	RX Light Output (90 min. run)
800 Lumens 90 CRI	476*	1387*	53*	9	312*
1000 Lumens 90 CRI	567	1651	55	10	312*
1200 Lumens 90 CRI	697*	2031*	54*	13	312*
1000 Lumens 80 CRI	590*	1717*	66*	9	380*
1200 Lumens 80 CRI	703*	2047*	70*	10	380*
1500 Lumens 80 CRI	867*	2526*	67*	13	380*

*estimated values