



S P R E D L I T E

Spredlite An Immaculate wall graze

Celebrating the beauty of iconic architecture

Wall Grazing System
or what we refer to as
our Spredlite

1955
Edison Price designed
his first wall grazer
for the Seagram Building

Spredlite harmonizes architectural elements by draping light over complex vertical surfaces fully and evenly—an effect first designed in 1955 for the historic Seagram Building—as can be seen in the U.S. Embassy in London, MetLife Building, The Regent Hong Kong, and The Museum of Modern Art (MoMA).

Spredlite expertly, yet subtly, highlights textured or specular surfaces from as complex as an emblem affixed to a travertine wall or as delicate as a glittering wall formed from a chain of beads.



What is **wallgrazing**?

What is wallgrazing?

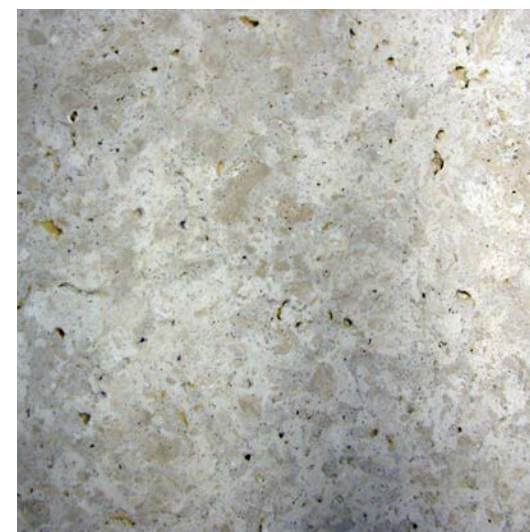
Wallgrazing accentuates texture by projecting high-angled, uniform light along a vertical surface to emphasize highlights and shadows.

What is not wallgrazing?

Striplights in coves unevenly lighting walls, with hotspots at the top and no light reaching the base.

Track Fixtures in coves must be individually and perfectly aimed, or suffer inconsistent light patterns.

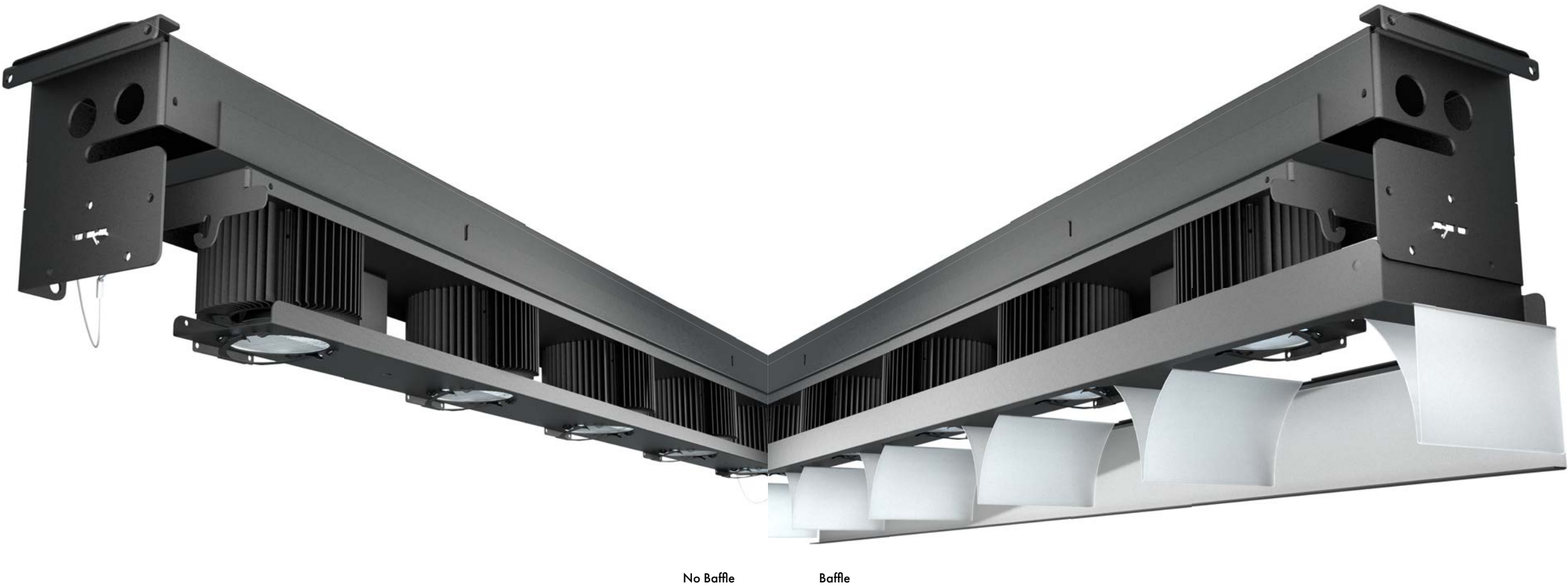
Wallwashers minimize texture. In specular walls, wallwashers produce hot spots of reflected glare.





U.S. Embassy • London, U.K.

Spredlite An Immaculate wall graze



- Length **18" - 48"**
- Modules **2, 3, 4, 5, Custom**
- CRI **Up to 92+**
- Max Lumens **Up to 2600**
- Shielding **Baffle or No Baffle**
- Shielding Angle **30° down the length of the luminaire (baffle)**
- Baffle Finish **Clear, Gold, Black**
- Mounting Height **10-40'**
- Made to Order **Curved, Recessed, Tunable White**

How Spredlite works



Braga Oris Associates
Architect

David Apfel
Lighting Designer

Powered by narrow-distribution LED modules, surface-mounted sections hold LEDs, heatsink, optics and lenses in precise focal relationship at 9” or 12” centers to ensure uniformity and ceiling to floor projection in rows to fill any length of space.

Cross Baffles: A Unique Feature

Each Spredlite is available with or without cross-baffles. In spaces where people can look up into the fixture down the length of the wall, cross-baffles are recommended to provide protection from the glare of the lamps. Spredlite cross-baffles are parabolic in profile, and redirect light down at useful angles —as opposed to flat baffles which actually increase glare from many angles.

Spread Lens

A molded glass lens spreads light laterally along the wall from side to side. Lenses are spring-mounted and keyed for easy maintenance and upgrading.

Tunability

RGBW and Tunable White compatible Spredlites are available on custom orders.



10



Kohn Pederson Fox
Architect

Fisher Marantz Stone
Lighting Designer

Metropolitan Life Building • New York City, NY

11

What makes a good wall for **Spredlite**?

Textured

Masonry
Wood
Fabric
Tile
Plaster
Stucco

Specular

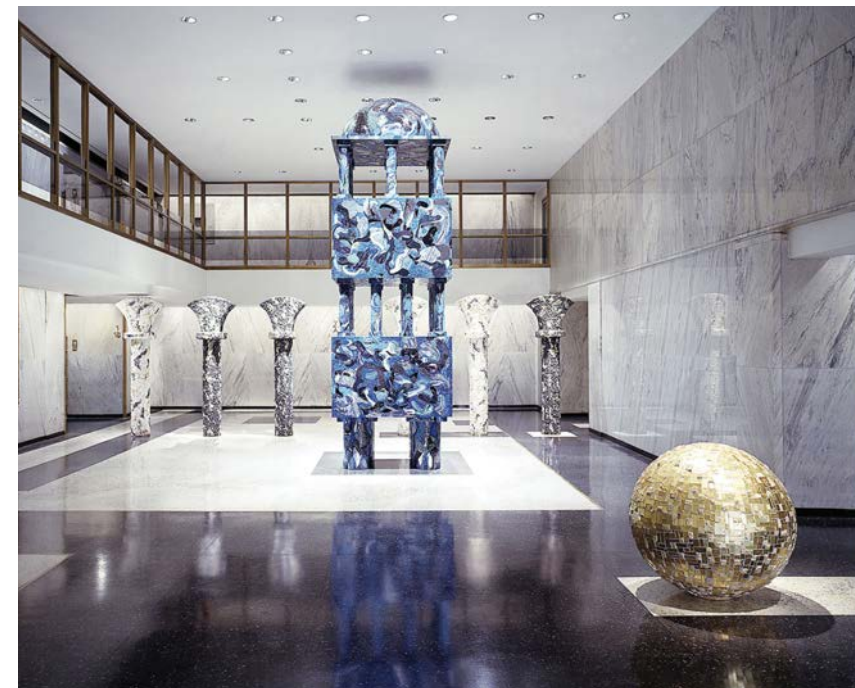
Polished stone
Metal panels
Etched glass

Bad Walls for Spredlite

Any wall with unpleasant texture
Any wall with paintings or signs,
producing shadows and reflections.

Grad Partnership
Architect

Gary Gordon
Lighting Designer



Skidmore, Owings and Merrill
Architect

Claude R. Engle
Lighting Designer



Standard Spredlites

We designed eight standard Spredlites to illuminate walls from 10' to 40' high. Available in a range of lumen options. Visit epl.com for specification sheets.

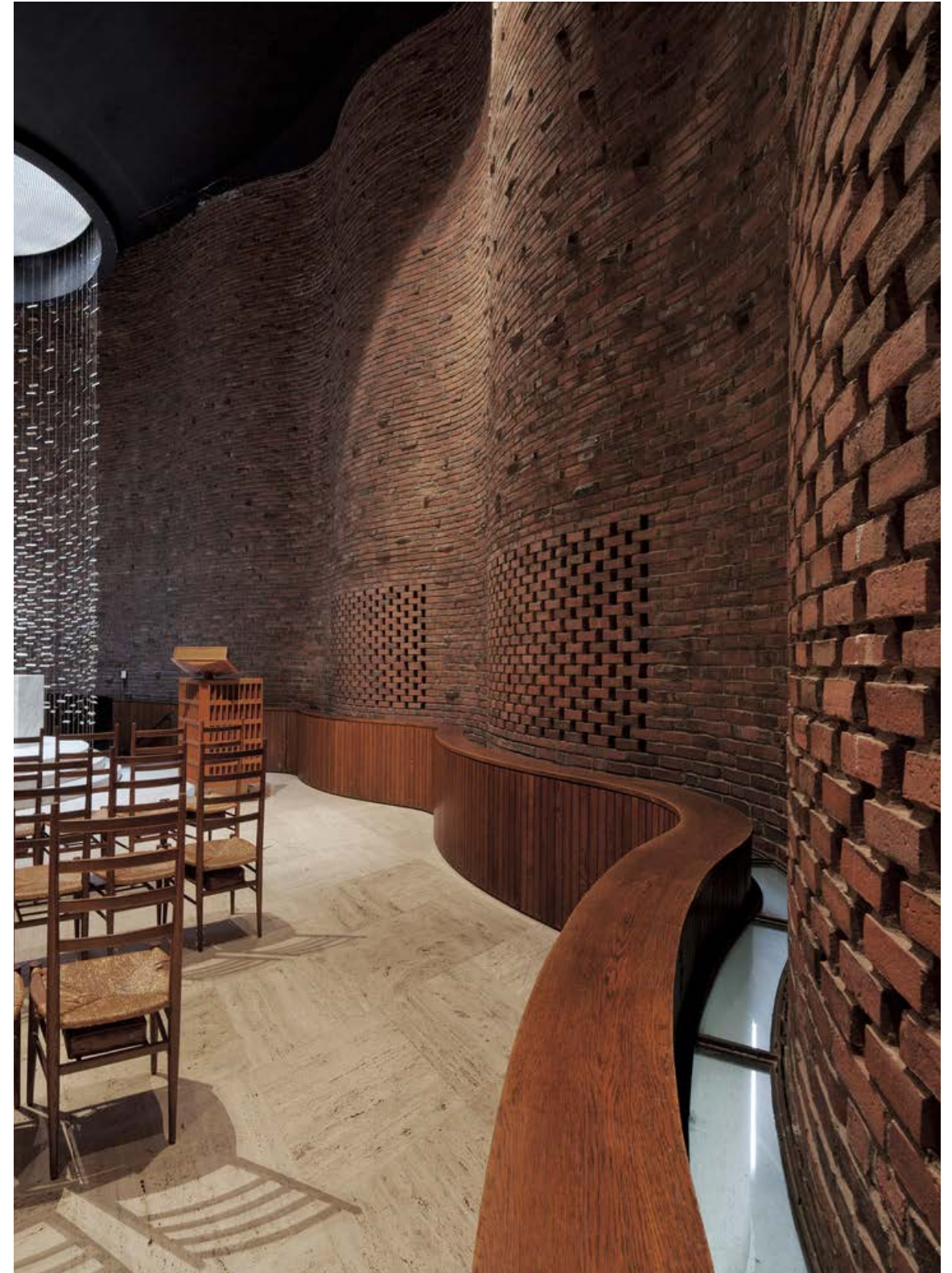
How to Specify

After identifying wall height, color, and reflectance, select:

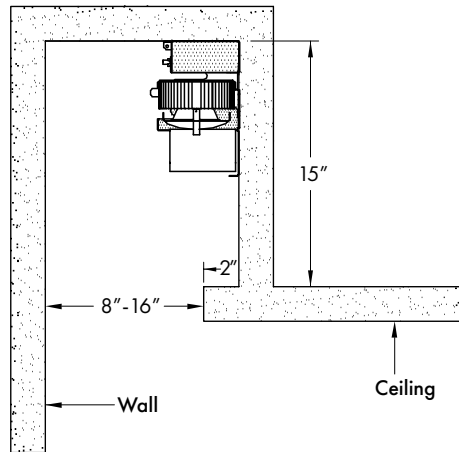
source type: LED

source spacing: 9" or 12"

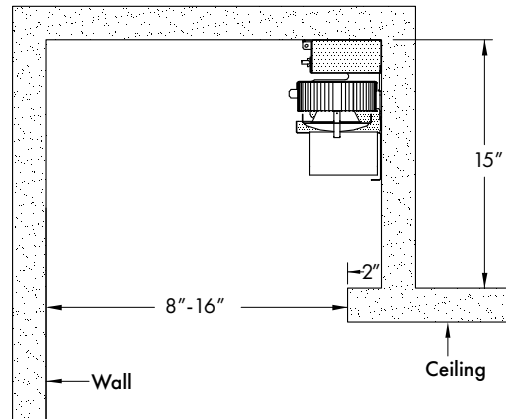
cross-baffles: with (DL) or without (PV)



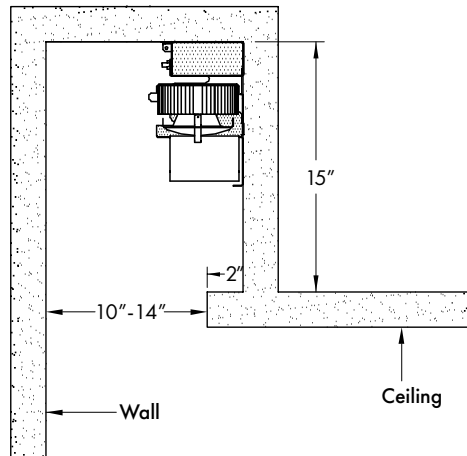
Cove Detail 1: 10' to 30' Ceilings



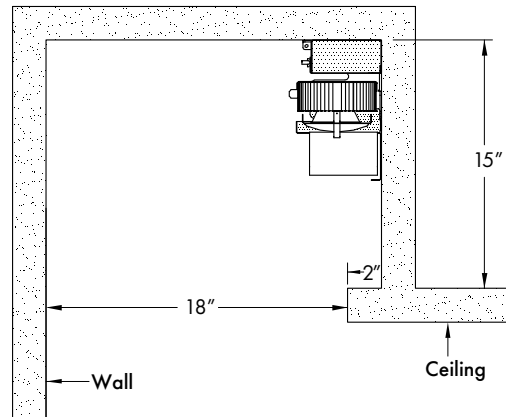
Cove Detail 2: 30' to 35' High Ceilings



Cove Detail 3: 12' to 25' Ceilings



Cove Detail 4: 35' to 40' Ceilings



Made-to-Order Spredlites

Offering:
CLP DL/9
Hi DL/9
CLP DL/12
Hi DL/12
CLP PV/9
Hi PV/9
CLP PV/12
Hi PV/12

Curved Walls

Our design allows Spredlite, with modification, to effortlessly follow the curve of a wall without disruptions. Send us cove length and radius, and we'll provide factory drawings.

Recessed

Ideal for concealing light sources. Housings sit flush to ceiling.

RGBW & Tunable White

For use with controls architectures including DMX or DALI. Consult us for details.

Options

Housing Finish
Standard black finish eliminates inner reflections.
White and custom colors available.

Source Spacing: 9" or 12"
Cross Baffles: with (DL) or without (PV)



718.685.0700 | www.epl.com | NY, USA