

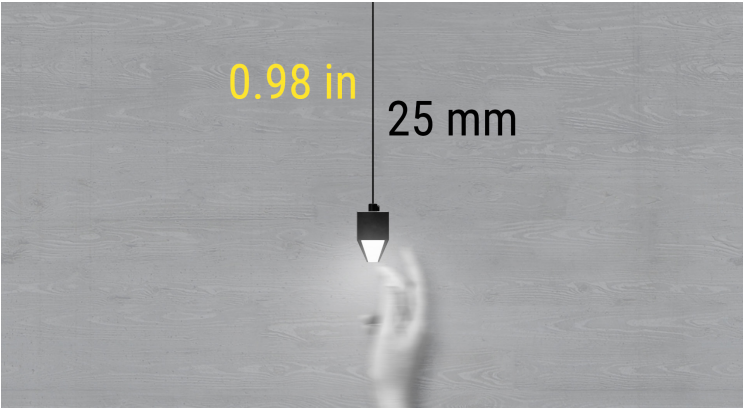
FINO

One-Inch Linear Slot



Slim, Streamlined, and Sophisticated

Our slim linear product family is designed for precision lighting in modern interiors. With sleek profiles, seamless illumination, and versatile options, this range delivers clean lines and consistent light performance for any application. Engineered for simplicity and elegance, it's lighting that works as beautifully as it looks.



INTRODUCTION

A versatile, ultra-slim linear lighting system combining sleek aesthetics with high-performance illumination. Perfect for modern architectural applications, this product line offers flexible design options, seamless integration, and exceptional lighting quality.

APPLICATIONS

The FINO system is ideal for applications requiring high-performance linear lighting, including retail, hospitality, and commercial interiors. Its ability to achieve seamless continuous runs up to 60 feet offers unique opportunities for bold and expansive lighting designs.

FEATURES

Profile

The FINO system is built with an ultra-slim 1" (25mm) extruded aluminum housing, engineered for lightweight durability and precise architectural integration. Its minimalist profile is designed to complement modern spaces without interrupting the aesthetic flow.

Optical Precision

FINO features advanced optical solutions, including high-quality polycarbonate lenses for uniform light diffusion and a newly developed flexible silicone lens. This innovative silicone lens allows for continuous row mounting up to 60 feet, delivering seamless illumination without visual breaks.

Custom Lengths

The system is manufactured to exact specifications, accommodating lengths from 4" to 96" (100mm to 2.4m) for standard fixtures, with the silicone lens enabling extended continuous runs, ideal for large-scale installations.

Dimming Compatibility

Engineered to integrate with leading dimming technologies, FINO supports 0-10V, DALI, and CASAMBI protocols. This compatibility ensures precise lighting control, from ambient dimming to high-output task lighting.

Installation

FINO is designed for efficient installation, featuring modular components, precision mounting hardware, and alignment guides. The flexible silicone lens simplifies continuous row mounting, reducing the need for multiple joins and ensuring a clean, uninterrupted installation.

Durability

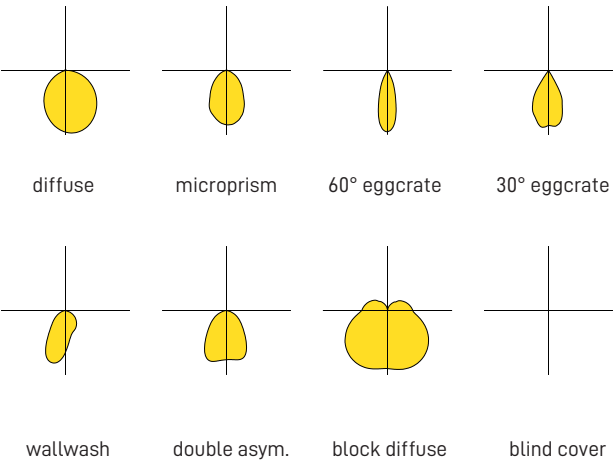
Constructed from extruded aluminum with a durable finish and paired with high-performance LEDs, FINO is designed for longevity. The polycarbonate and silicone lenses are engineered for resilience, maintaining clarity and flexibility in demanding environments.

SPECIFICATIONS

EFFICIENCY: 120LM/W

Configuration	Lumens/ft	W/ft	Distributions
Suspended Direct	Up to 630	6.11	Diffuser, Microprismatic, 30° Multi-Wownlight, 60° Multi-Downlight, Asymmetric, Double Asymmetric, Block Diffuse, Blind Cover
Suspended Direct/ Indirect	Up to 690 indir. Up to 690 direct	6.06	
Recessed	Up to 630	6.07	
Surface-Mount	Up to 630	6.11	

OPTICS DISTRIBUTIONS



LISTINGS



ORDERING GUIDE

Example: FINO-DP-FLEX-27-90-WH-08-DIM2010-MVOLT-SS

FAMILY -	LENS/OPTIC -	CCT -	CRI -	FINISH -	LENGTH / SHAPE -
FINO-DP Fino Direct Pendant Mount	FLEX Flexible Silicone Lens (Diffuse) (<60'/roll)	27 2700K	90 90+ CRI	WH White Finish	02 2'-0" Length
FINO-DINP-1C Fino Direct/Indirect Pendant - 1 -Circuit	PR Prismatic	30 3000K		BK Black Finish	04 4'-0" Length
FINO-DINP-2C Fino Direct/Indirect Pendant - 2 - Circuit	AS Asymmetric	35 3500K		CUST Custom Finish (RAL)	06 6'-0" Length
FINO-SRF Fino Direct Surface Mount	DAS Double Asymmetric	40 4000K			08 8'-0" Length
FINO-DIN-1C-WM Fino Direct/Indirect Wall-Mount - 1 - Circuit	BD Block Frosted (Drop)	50 5000K			CUST* Custom Length / Shape; *Consult Factory
FINO-DIN-2C-WM Fino Direct/Indirect Wall-Mount - 2 - Circuit	BL Blind Lens	TWH* 2700K-6500K *Consult factory for availability			
FINO-RFL Fino Recessed Flanged Trim	G30¹ Grating 30°				
FINO-RTL Fino Recessed Trimless	G60¹ Grating 60°				
	¹ Grating uses custom rigid 538 mm (21-3/16") LED boards, with cutting units at 4-3/16"				

DRIVERS ² -	VOLTAGE ³ -	SUSPENSION (OPTIONAL) -
DIM10 (Blank) 0-10V, 1%	MVOLT 120-277V	SS (Standard) (Blank)⁴ 6'-6" (2M) Suspension;
DALI* *Consult factory for availability	³ Luminaire input voltage fixed at 24VDC; Remote driver input is multi-volt with a dedicated 24V output to luminaire	SC* Custom Length Suspension; *Consult Factory
CASAMBI* *Consult factory for availability		⁴ Silver (SI) cable finish is standard; specify if alternate is needed
² Remote drivers with proprietary cable gripper canopy system		

IN APPLICATION

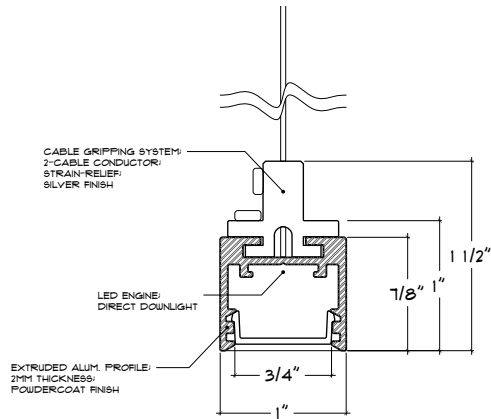
The FINO mounting options include Pendant for suspended lighting, Surface for low-profile installations, Wall for vertical illumination, Recessed Flanged for clean installs with visible edges, and Recessed Trimless for seamless, concealed designs.



FAMILY (OF PROFILES)

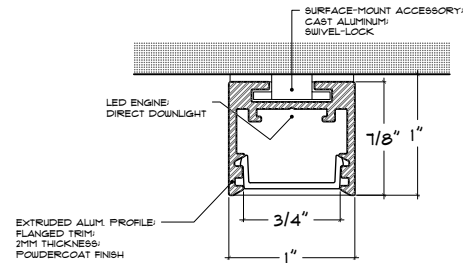
FINO-DP (Fino Direct Pendant Mount)

Direct pendant lighting for workspaces and retail.



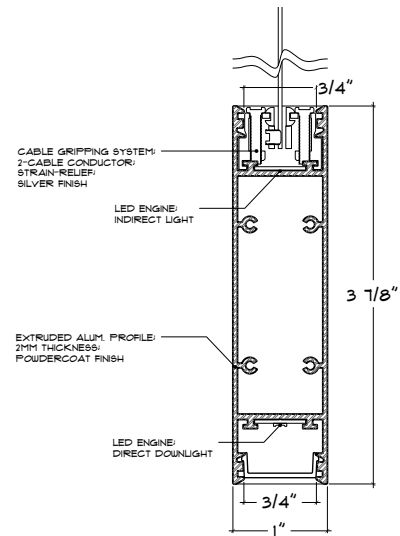
FINO-SRF (Fino Direct Surface Mount)

Surface-mounted for under-cabinet and low-ceiling use.



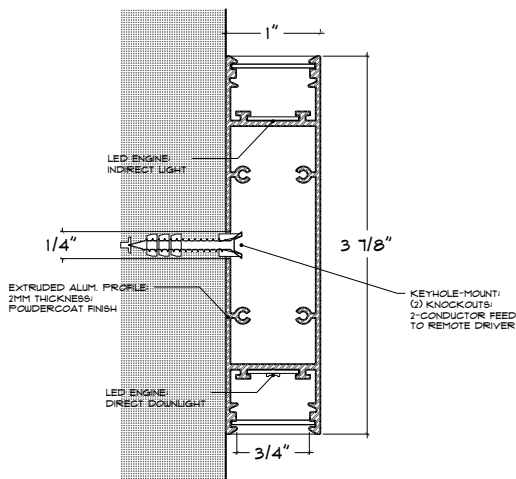
FINO-DINP-1C/2C (Fino Direct/Indirect Pendant – 1/2 Circuit)

Single-circuit pendant for balanced direct/indirect light.
Dual-circuit pendant for dynamic layered lighting.



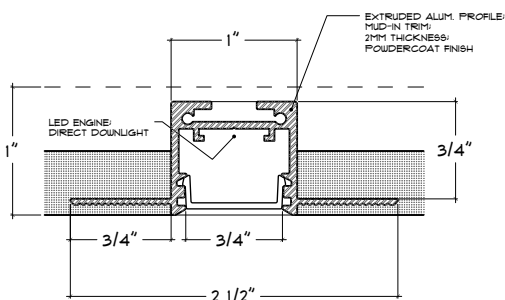
FINO-DIN-1C/2C-WM (Fino Direct/Indirect Wall-Mount – 1/2 Circuit)

Wall-mounted single circuit for direct/indirect light.
Dual-circuit wall mount for layered lighting control.



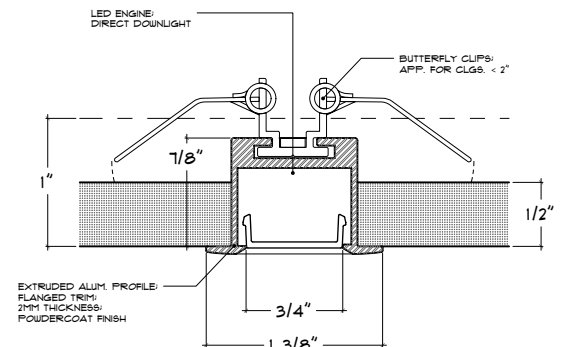
FINO-RTL (Fino Recessed Trimless)

Trimless recessed for seamless, modern integration.



FINO-RFL (Fino Recessed Flanged Trim)

Recessed flanged trim for clean ambient lighting.



LENS/OPTICS -

FLEX (Flexible Silicone Diffuser)

A versatile option for uniform, general lighting in offices, retail spaces, and corridors. It delivers clean, even light, making it a reliable choice for a wide range of applications.

Flexible silicone lens in rolls up to 66 feet [20m]



AS (Asymmetric)

Provides directional light for wall washing or accentuating architectural features. This lens is ideal for highlighting textures, art, or signage with precision.



PR (Prismatic)

Best for reducing glare while maintaining high performance, perfect for offices and task-focused environments. The micro-prismatic surface ensures superior visual comfort in spaces where precision is key.



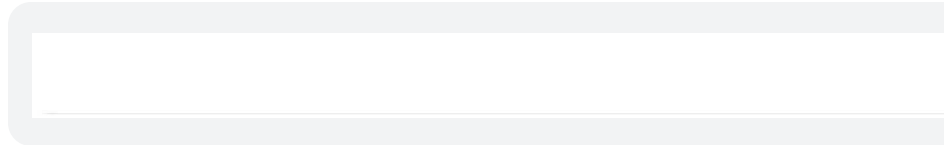
DAS (Double Asymmetric)

Designed for aisle lighting, shelving displays, and retail environments requiring balanced light distribution. It provides dual directional beams for even illumination across wide spaces.



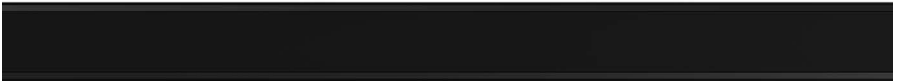
SG (Soft Glow)

Adds a decorative touch with soft, glare-free illumination for hospitality and residential applications. The slightly protruding design enhances aesthetics while maintaining functionality.



BL (Blackout)

Used to cover unused sections in continuous runs for a clean, finished appearance. It ensures the fixture retains a cohesive look even in non-illuminated areas.



G30 (Micro-Optics 30°) & G60 (Micro-Optics 60°)

Gratings provide precise directional control with options for 30° or 60° beam angles, tailored to task or accent lighting needs. These options are ideal for creating focused illumination or blending light in open spaces, using custom rigid LED boards for maximum flexibility.

***Has specific cutting lengths independent of product line.
Please consult factory for custom finished lengths.**



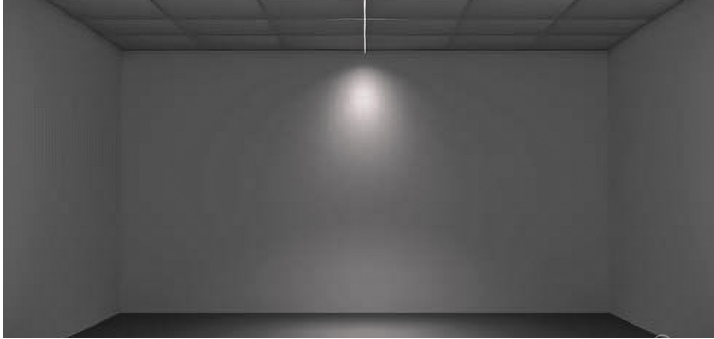
FLEX (Flexible Silicone Diffuser)

Our silicone diffuser offers 65 feet [20 meters] of uninterrupted, glare-free illumination in a slim, streamlined design. Ideal for straight runs in interior spaces, it delivers smooth, consistent lighting with no hotspots or distractions. Designed for precision and simplicity, it's the go-to solution for modern, refined lighting projects.

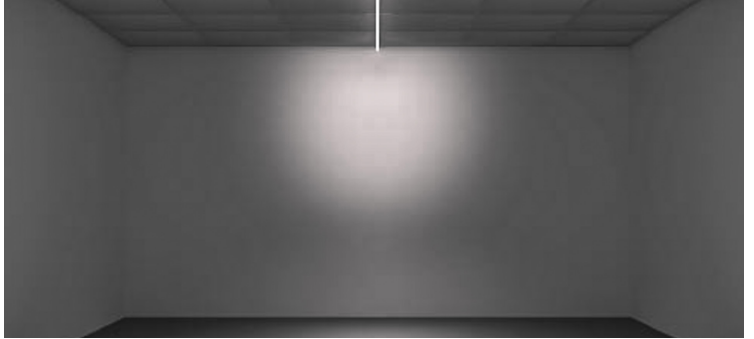


LENS/OPTICS -

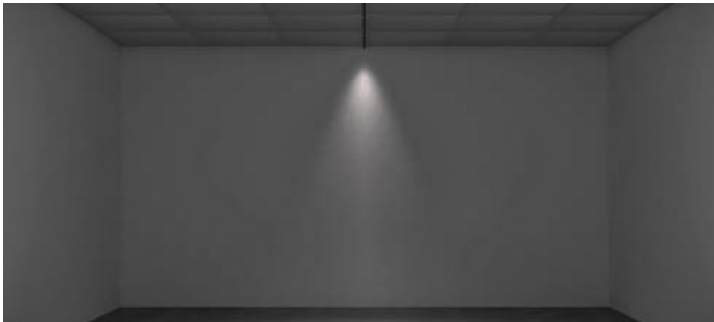
FLEX (Flexible Silicone Diffuser)



SG (Soft Glow)



PR (Prismatic)



AS (Asymmetric)



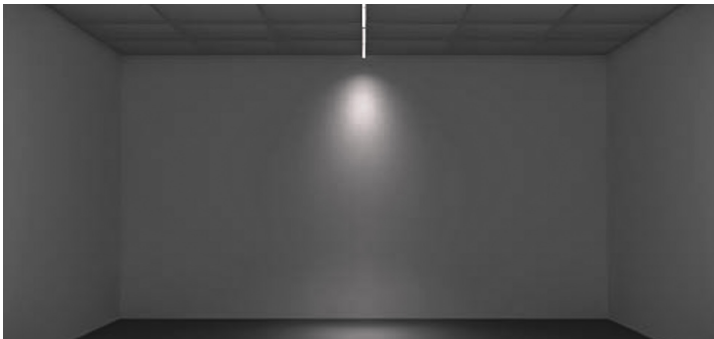
DAS (Double Asymmetric)



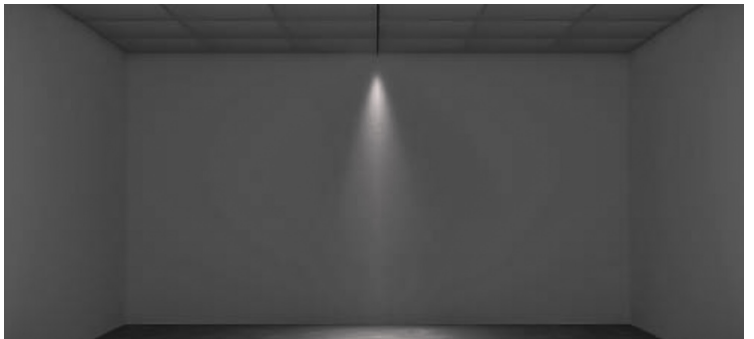
BL (Blackout)



G30 (Micro-Optics 30°) & G60 (Micro-Optics 60°)



G30 (Micro-Optics 30°) & G60 (Micro-Optics 60°)



FINISHES -

WH (White Powdercoated)

Trimless recessed for seamless, modern integration.



BK (Black Powdercoated)

Trimless recessed for seamless, modern integration.



CUST (Custom RAL Powdercoated)

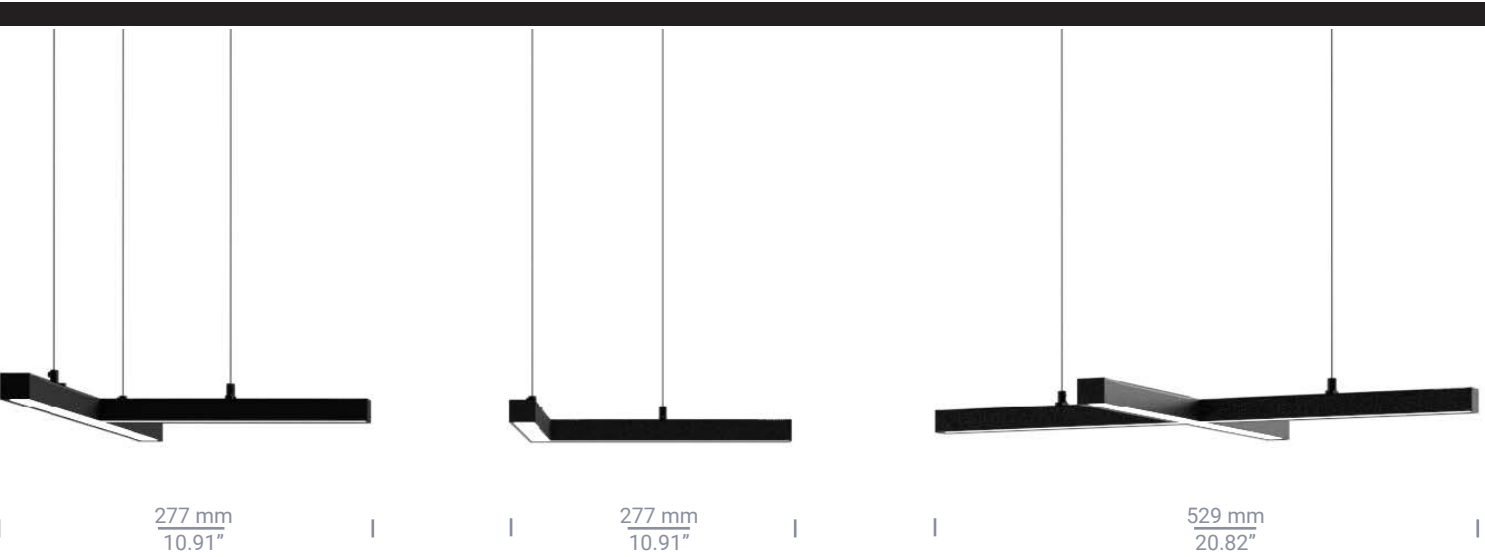
Consult factory for custom RAL-matched powdercoated finishes

CORNER CONDITIONS -

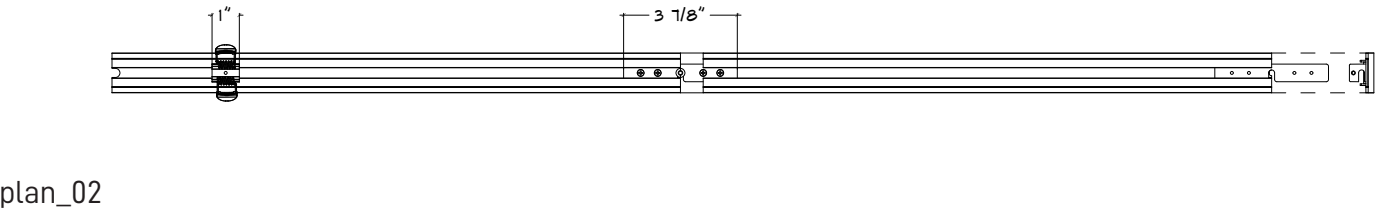
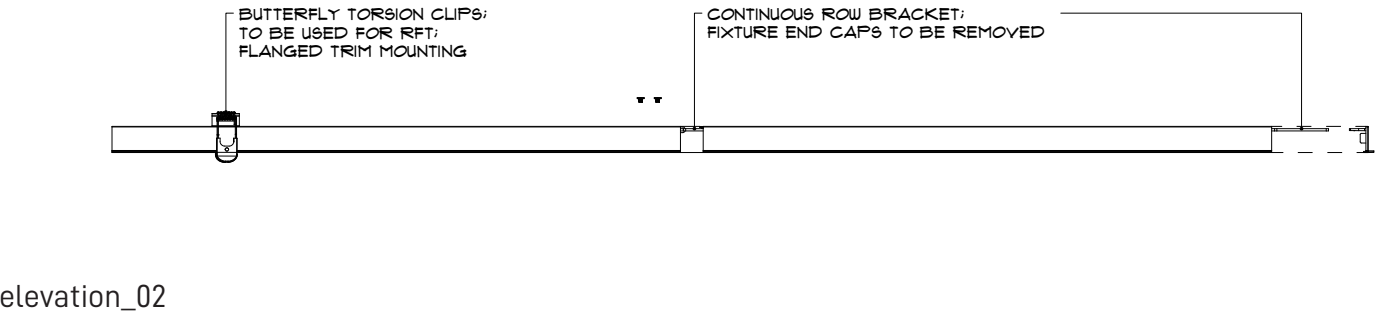
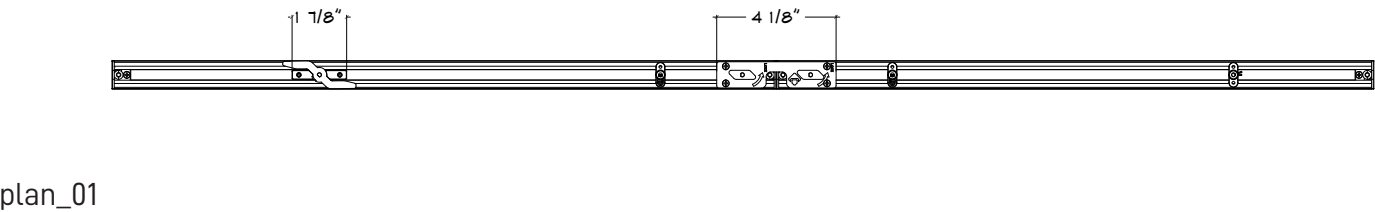
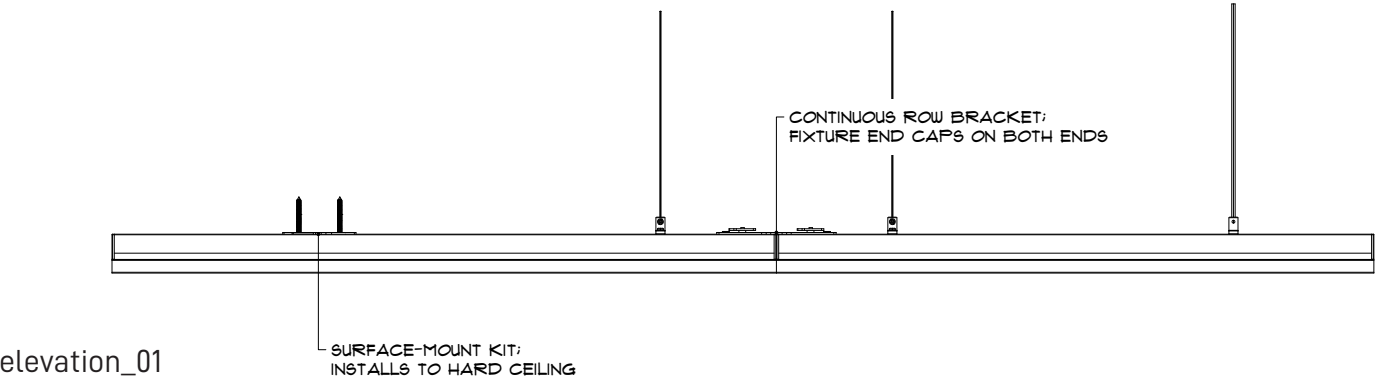
T-Corner
Standalone luminaire, or custom layout

L-Corner
Standalone luminaire, or custom layout

X-Corner
Standalone luminaire, or custom layout



ACCESSORIES DIAGRAM - Common Installation Types



Ensuring Proper LED Functionality with Remote Drivers -

When using remote drivers for LED systems, it's crucial to provide sufficient current for the LEDs to operate without issues such as flickering, dimming, or color shifts. The distance between the driver and the fixture plays a key role in the performance of the system. To prevent these problems, the correct wire gauge must be chosen based on the required distance between the driver and the fixture.

For optimal performance, a voltage drop of up to 3-4% is typically acceptable.

Calculate the Total Power Consumption

Begin by calculating the total wattage of your LED system.
If the wattage is not an exact round number, round up to the nearest 10 watts for simplicity.

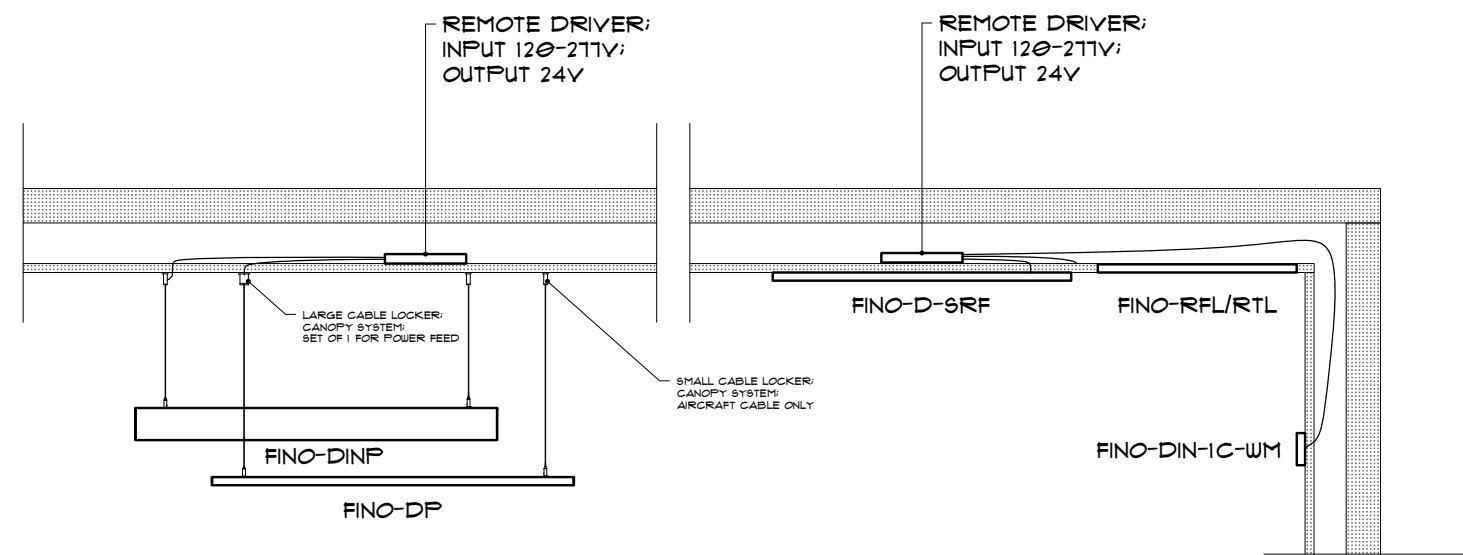
Measure the Distance Between the Driver and Fixture

Measure the distance between your driver and the fixture.
Round up the distance to the nearest increment if necessary to ensure proper calculation.

Select the Correct Wire Gauge

Refer to the chart for maximum allowable wire length based on your system's wattage and distance.
The left column will indicate the necessary wire gauge to maintain an acceptable voltage drop, typically not exceeding 3%.

Table with 13 columns: Wire Gauge, 10W, 20W, 30W, 40W, 50W, 60W, 70W, 80W, 90W, 100W, 200W, 300W. Rows include 18 AWG, 16 AWG, 14 AWG, 12 AWG, 10 AWG. Includes a title 'Maximum Cable Length from Driver to Fixture' and a subtitle '24V DC Driver'.



DRIVER/DIMMING OPERATION - 120W Constant Voltage + Constant Current LED Driver

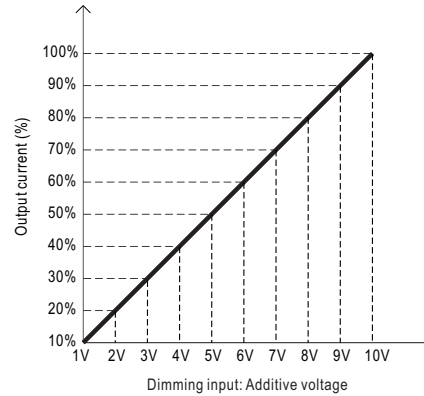
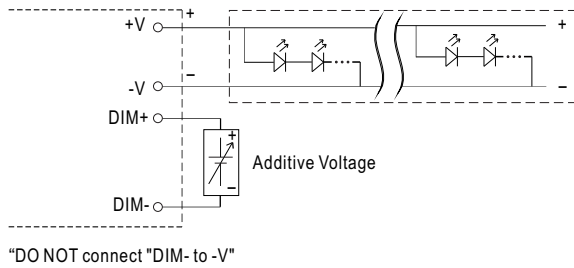
HLG-120H SERIES



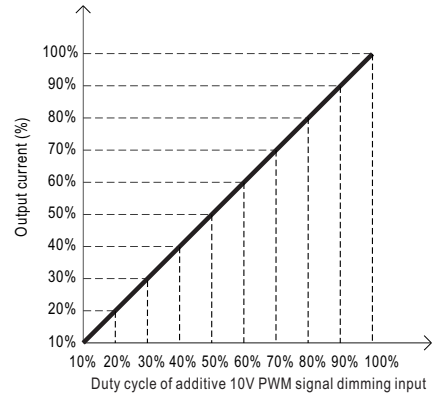
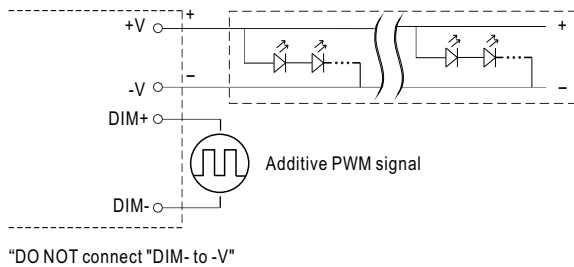
※ 3 in 1 dimming function (for B/AB-Type)

- Output constant current level can be adjusted by applying one of the three methodologies between DIM+ and DIM-:
1 ~ 10VDC, or 10V PWM signal or resistance.
- Direct connecting to LEDs is suggested. It is not suitable to be used with additional drivers.
- Dimming source current from power supply: 100 μ A (typ.)

◎ Applying additive 1 ~ 10VDC



◎ Applying additive 10V PWM signal (frequency range 100Hz ~ 3KHz):



◎ Applying additive resistance:

